



Manager Watch™ Series of Surveys for the month ending January 2016

Research & Product Development

FINANCIAL SERVICES


ALEXANDERFORBES
Securing your financial well-being.

S.A. MANAGER WATCH™ - BEST INVESTMENT VIEW

Objective - The portfolios are balanced (i.e. multiple asset class) portfolios, subject to the restrictions imposed by Regulation 28 of the Pension Funds Act and are confined to investing in South Africa only. These portfolios represent the managers' best investment view.

GENERAL INFORMATION								
	GIPS™ (Verified/ Compliant)	Portfolio Type	Notes	Regulation 28 Compliant Certification (Y/N)	Benchmark Description	Admin - efficiency : Date data submitted	No.of funds in composite	Portfolio Size (R m)
INVESTMENT MANAGERS								
Absa Asset Management Domestic Balanced	V	Segregated		Y	65% SWIX, 25% ALBI, 10% STeFI 3 month NCD (effective 1 August 2015)	09 February 2016	2	3 617
Allan Gray	V	Segregated		Y	SA LMW Average	09 February 2016	13	15 341
Coronation	V	Segregated	Non Investable	Y	SA LMW Median	10 February 2016	10	11 663
Foord Domestic Balanced	C	Segregated		Y	65% ALSI, 5% PROP, 25% ALBI, 5% STFCAD	12 February 2016	6	8 144
Investec Asset Management	V	Segregated		Y	SA LMW Median	12 February 2016	10	6 438
Investment Solutions Performer Local	n/a	Pooled multi-manager		Y	SA LMW Median	12 February 2016	n/a	9 419
Investment Solutions Value Alpha Local	n/a	Pooled multi-manager		Y	SA LMW Median	12 February 2016	n/a	433
Oasis	V	Segregated		Y	SA BIV Average	12 February 2016	1	277
Pan-African	V	Segregated			ALSI 60%; ALBI 40%	10 February 2016	2	287
Prescient Domestic Balanced	V	Segregated		Y	Inflation	12 February 2016	2	254
Prudential Domestic Balanced	V	Segregated		Y	The total fund is benchmarked against the MEDIAN performance of the Domestic LMW performance.	03 February 2016	5	4 787
Stanlib AM	C	Segregated			SA BIV Median	10 February 2016	2	1 900
			<i>This includes multi-managers thus must be noted as possible "double-counting"</i>					62 560

* Reasonable use of the survey may be made for purposes of comment and study provided that full acknowledgement is made to "Alexander Forbes Research & Product Development".

* While all possible care is taken in the compilation of the Survey, reliance is placed on information received from Investment Managers.

* The rankings and statistical information have been supplied for illustrative purposes only.

* Performance figures are shown gross of fees.

* Performance should not be judged over a short period of time.

* Past performance is not necessarily a guide to future performance.

S.A. MANAGER WATCH™ - BEST INVESTMENT VIEW

Objective - The portfolios are balanced (i.e. multiple asset class) portfolios, subject to the restrictions imposed by Regulation 28 of the Pension Funds Act and are confined to investing in South Africa only. These portfolios represent the managers' best investment view.

INVESTMENT DATA TO THE END OF JANUARY 2016																								
PERFORMANCE DATA																								
	Month			Quarter			Year to Date			1 Year			3 Years (p.a.)			5 Years (p.a.)			7 Years (p.a.)			10 Years (p.a.)		
	Portfolio	Rank	Benchmark	Portfolio	Rank	Benchmark	Portfolio	Rank	Benchmark	Portfolio	Rank	Benchmark	Portfolio	Rank	Benchmark	Portfolio	Rank	Benchmark	Portfolio	Rank	Benchmark	Portfolio	Rank	Benchmark
INVESTMENT MANAGERS																								
Absa Asset Management Domestic Balanced	-1.57%	11	-0.28%	-5.31%	4	-5.60%	-1.57%	11	-0.28%	-1.21%	6	-1.89%	8.00%	8	8.06%	10.27%	9	11.01%	13.15%	9	13.55%	12.38%	8	11.46%
Allan Gray	0.78%	1	-1.06%	-1.75%	1	-6.35%	0.78%	1	-1.06%	3.30%	2	-1.52%	10.80%	3	7.90%	12.44%	5	11.00%	13.77%	8	14.06%	13.69%	3	11.90%
Coronation	-2.49%	12	-1.15%	-7.99%	11	-6.26%	-2.49%	12	-1.15%	-2.77%	10	-2.38%	9.40%	5	8.00%	12.34%	7	11.11%	15.84%	3	14.29%	13.50%	4	12.19%
Foord Domestic Balanced	-1.43%	10	-1.03%	-5.93%	6	-6.60%	-1.43%	10	-1.03%	-0.38%	5	-1.54%	11.02%	2	8.62%	15.26%	1	11.52%	17.33%	1	13.95%	14.31%	1	11.41%
Investec Asset Management	-1.21%	8	-1.15%	-6.64%	9	-6.26%	-1.21%	8	-1.15%	4.02%	1	-2.38%	11.67%	1	8.00%	13.16%	2	11.11%	16.45%	2	14.29%	14.15%	2	12.19%
Investment Solutions Performer Local	-1.32%	9	-1.15%	-6.01%	7	-6.26%	-1.32%	9	-1.15%	-0.07%	4	-2.59%	10.02%	4	7.98%	12.93%	3	11.08%	15.40%	5	14.27%	13.30%	5	12.17%
Investment Solutions Value Alpha Local	-0.72%	6	-1.15%	-5.83%	5	-6.26%	-0.72%	6	-1.15%	-1.86%	8	-2.59%	8.77%	7	7.98%	12.39%	6	11.08%	14.47%	7	14.27%	12.90%	7	12.17%
Oasis	-1.08%	7	-0.63%	-9.53%	12	-5.71%	-1.08%	7	-0.63%	-8.38%	12	-1.35%	4.21%	12	7.64%	9.65%	11	10.73%	12.37%	11	13.68%	11.22%	10	11.77%
Pan-African	0.45%	2	0.06%	-6.88%	10	-4.85%	0.45%	2	0.06%	-4.29%	11	-0.78%	6.63%	10	8.60%	10.14%	10	11.47%	12.75%	10	14.38%	10.41%	11	12.21%
Prscient Domestic Balanced	-0.03%	3	0.26%	-3.82%	3	0.61%	-0.03%	3	0.26%	0.67%	3	5.14%	6.20%	11	5.28%	*	*	*	*	*	*	*	*	*
Prudential Domestic Balanced	-0.44%	5	-0.72%	-6.40%	8	-5.58%	-0.44%	5	-0.72%	-1.35%	7	-1.49%	8.87%	6	8.33%	12.91%	4	11.31%	15.44%	4	14.26%	13.22%	6	12.13%
Stanlib AM	-0.33%	4	-0.72%	-3.53%	2	-5.58%	-0.33%	4	-0.72%	-1.88%	9	-1.49%	6.84%	9	8.33%	11.91%	8	11.31%	14.60%	6	14.26%	11.29%	9	12.13%

* Reasonable use of the survey may be made for purposes of comment and study provided that full acknowledgement is made to "Alexander Forbes Research & Product Development".

* While all possible care is taken in the compilation of the Survey, reliance is placed on information received from Investment Managers.

* The rankings and statistical information have been supplied for illustrative purposes only.

* Reasonable use of the survey may be made for purposes of comment and study provided that full acknowledgement is made to "Alexander Forbes Research & Product Development".

* Performance should not be judged over a short period of time.

* Past history is not necessarily a guide to future performance.

S.A. MANAGER WATCH™ - BEST INVESTMENT VIEW

Objective - The portfolios are balanced (i.e. multiple asset class) portfolios, subject to the restrictions imposed by Regulation 28 of the Pension Funds Act and are confined to investing in South Africa only. These portfolios represent the managers' best investment view.

INVESTMENT DATA TO THE END OF JANUARY 2016															
RISK VS RETURN															
	Calculated on 3 year performance returns							Calculated on 5 year performance returns							
	3 Year Return (p.a.)	Rank	Volatility	Rank	Active Return	Tracking Error	Sharpe Ratio	5 Year Return (p.a.)	Rank	Volatility	Rank	Active Return	Tracking Error	Sharpe Ratio	
Absa Asset Management Domestic Balanced	8.00%	8	6.99%	3	-0.07%	2.20%	0.30	10.27%	9	6.62%	2	-0.74%	2.01%	0.68	
Allan Gray	10.80%	3	7.50%	4	2.90%	2.80%	0.65	12.44%	5	6.44%	1	1.43%	2.74%	1.03	
Coronation	9.40%	5	7.90%	7	1.40%	2.44%	0.44	12.34%	7	7.16%	6	1.24%	2.05%	0.92	
Foord Domestic Balanced	11.02%	2	7.81%	6	2.40%	3.47%	0.66	15.26%	1	7.57%	7	3.75%	3.14%	1.25	
Investec Asset Management	11.67%	1	9.41%	12	3.68%	3.38%	0.61	13.16%	2	8.15%	11	2.05%	3.10%	0.91	
Investment Solutions Performer Local	10.02%	4	7.72%	5	2.04%	0.95%	0.54	12.93%	3	6.99%	4	1.85%	0.96%	1.02	
Investment Solutions Value Alpha Local	8.77%	7	8.00%	8	0.78%	1.72%	0.36	12.39%	6	7.08%	5	1.31%	1.64%	0.93	
Oasis	4.21%	12	9.20%	11	-3.42%	3.26%	-0.18	9.65%	11	8.09%	10	-1.08%	2.77%	0.48	
Pan-African Asset Management	6.63%	10	8.26%	9	-1.96%	2.21%	0.09	10.14%	10	7.59%	8	-1.33%	1.94%	0.58	
Prescient Domestic Balanced	6.20%	11	6.54%	2	0.92%	6.78%	0.05	*		*		*	*	*	
Prudential Domestic Balanced	8.87%	6	8.26%	10	0.54%	1.39%	0.36	12.91%	4	7.91%	9	1.60%	1.58%	0.90	
Stanlib AM	6.84%	9	6.53%	1	-1.49%	2.20%	0.15	11.91%	8	6.66%	3	0.61%	2.32%	0.92	
			Lower volatility = higher ranking						Lower volatility = higher ranking						
STATISTICS															
Range	7.46%							5.62%							
Highest	11.67%		9.41%		3.68%	6.78%	0.66	15.26%		8.15%		3.75%	3.14%	1.25	
Upper Quartile	10.22%		8.26%		2.13%	3.29%	0.56	12.92%		7.75%		1.73%	2.76%	0.98	
Median	8.54%		7.85%		0.85%	2.32%	0.36	11.43%		7.16%		1.31%	2.05%	0.92	
Average	7.74%		7.84%		0.64%	2.73%	0.34	10.78%		7.30%		0.97%	2.20%	0.87	
Lower Quartile	6.79%		7.38%		-0.42%	2.08%	0.13	11.09%		6.83%		-0.07%	1.79%	0.79	
Lowest	4.21%		6.53%		-3.42%	0.95%	-0.18	9.65%		6.44%		-1.33%	0.96%	0.48	
Number of participants		12		12		12			11		11		11	11	

* Reasonable use of the survey may be made for purposes of comment and study provided that full acknowledgement is made to "Alexander Forbes Research & Product Development.

* While all possible care is taken in the compilation of the Survey, reliance is placed on information received from Investment Managers.

* The rankings and statistical information have been supplied for illustrative purposes only.

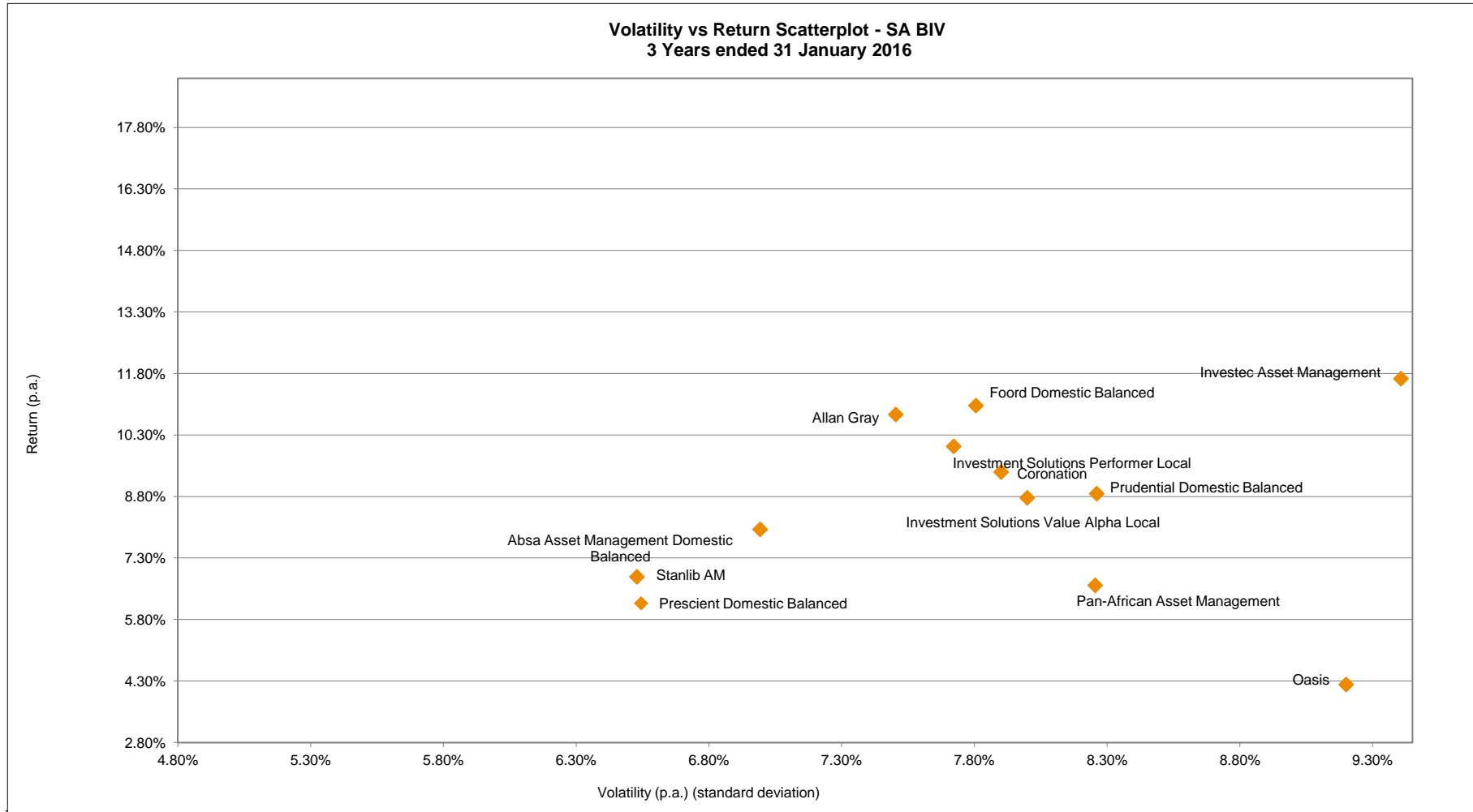
* Performance figures are shown gross of fees.

* Quantitative figures are calculated on 3 year performance returns.

* Performance should not be judged over a short period of time.

* Past history is not necessarily a guide to future performance.

S.A. MANAGER WATCH™ - BEST INVESTMENT VIEW



Reasonable use of the survey may be made for purposes of comment and study provided that full acknowledgement is made to "Alexander Forbes Research & Product Development".

** Please see final page for Disclaimers and Glossary **

S.A. MANAGER WATCH™ - CONSERVATIVE

Objective - The portfolios are balanced (i.e. multiple asset class) portfolios, subject to the restrictions imposed by Regulation 28 of the Pension Funds Act and aim to minimise the probability of short-term (i.e. less than one year) capital loss

GENERAL INFORMATION								
	GIPS™ (Verified/ Compliant)	Portfolio Type	Notes	Regulation 28 Compliant Certification (Y/N)	Benchmark Description	Admin - efficiency : Date data submitted	No.of funds in composite	Portfolio Size (R m)
INVESTMENT MANAGERS								
Allan Gray Life Domestic Stable Portfolio	V	Pooled		Y	Alexander Forbes 3 month Deposit Index plus 2%	09 February 2016	n/a	1 242
Investment Solutions Conserver Local	n/a	Pooled multi-manager		Y	40% SWIX, 30% ALBI, 30% SteFI Call Deposit Index	12 February 2016	n/a	2 738
Prudential Domestic Conservative Balanced	V	Segregated		Y	The total fund is benchmarked against the Bespoke Benchmark	03 February 2016	1	995
			<i>This includes multi-managers thus must be noted as possible "double-counting"</i>					
TOTAL								4 975

- * Reasonable use of the survey may be made for purposes of comment and study provided that full acknowledgement is made to "Alexander Forbes Research & Product Development".
- * While all possible care is taken in the compilation of the Survey, reliance is placed on information received from Investment Managers.
- * The rankings and statistical information have been supplied for illustrative purposes only.
- * Performance figures are shown gross of fees.
- * Performance should not be judged over a short period of time.
- * Past performance is not necessarily a guide to future performance.

S.A. MANAGER WATCH™ - CONSERVATIVE

Objective - The portfolios are balanced (i.e. multiple asset class) portfolios, subject to the restrictions imposed by Regulation 28 of the Pension Funds Act and aim to minimise the probability of short-term (i.e. less than one year) capital loss

INVESTMENT DATA TO THE END OF JANUARY 2016																								
PERFORMANCE DATA																								
	Month			Quarter			Year to Date			1 Year			3 Years (p.a.)			5 Years (p.a.)			7 Years (p.a.)			10 Years (p.a.)		
	Portfolio	Rank	Benchmark	Portfolio	Rank	Benchmark	Portfolio	Rank	Benchmark	Portfolio	Rank	Benchmark	Portfolio	Rank	Benchmark	Portfolio	Rank	Benchmark	Portfolio	Rank	Benchmark			
INVESTMENT MANAGERS																								
Allan Gray Life Domestic Stable Portfolio	1.02%	1	0.70%	1.64%	1	2.06%	1.02%	1	0.70%	8.39%	1	8.24%	9.03%	1	7.72%	8.81%	3	7.62%	9.47%	3	8.15%	10.85%	2	*
Investment Solutions Conserver Local	0.75%	3	0.59%	-3.13%	2	-3.66%	0.75%	3	0.59%	-0.28%	3	-0.94%	6.29%	3	7.43%	8.86%	2	9.68%	10.84%	2	11.09%	10.54%	3	9.95%
Prudential Domestic Conservative Balanced	0.94%	2	0.63%	-3.49%	3	-3.60%	0.94%	2	0.63%	0.40%	2	-0.70%	8.94%	2	7.63%	11.97%	1	9.86%	13.31%	1	11.28%	12.09%	1	10.12%

* Reasonable use of the survey may be made for purposes of comment and study provided that full acknowledgement is made to "Alexander Forbes Research & Product Development".

* While all possible care is taken in the compilation of the Survey, reliance is placed on information received from Investment Managers.

* The rankings and statistical information have been supplied for illustrative purposes only.

* Reasonable use of the survey may be made for purposes of comment and study provided that full acknowledgement is made to "Alexander Forbes Research & Product Development".

* Performance should not be judged over a short period of time.

* Past history is not necessarily a guide to future performance.

S.A. MANAGER WATCH™ - CONSERVATIVE

Objective - The portfolios are balanced (i.e. multiple asset class) portfolios, subject to the restrictions imposed by Regulation 28 of the Pension Funds Act and are confined to investing in South Africa only. These portfolios represent the managers' best investment view.

INVESTMENT DATA TO THE END OF JANUARY 2016														
RISK VS RETURN														
	Calculated on 3 year performance returns						Calculated on 5 year performance returns							
	3 Year Return (p.a.)	Rank	Volatility	Rank	Active Return	Tracking Error	Sharpe Ratio	5 Year Return (p.a.)	Rank	Volatility	Rank	Active Return	Tracking Error	Sharpe Ratio
Allan Gray Life Domestic Stable Portfolio	9.03%	1	2.90%	1	1.31%	2.89%	1.08	8.81%	3	2.33%	1	1.19%	2.32%	1.30
Investment Solutions Conserver Local	6.29%	3	4.98%	2	-1.15%	2.14%	0.08	8.86%	2	4.54%	2	-0.82%	1.88%	0.68
Prudential Domestic Conservative Balanced	8.94%	2	5.80%	3	1.31%	0.96%	0.53	11.97%	1	5.58%	3	2.11%	1.07%	1.11
			<i>Lower volatility = higher ranking</i>							<i>Lower volatility = higher ranking</i>				
STATISTICS														
Range	2.74%							3.16%						
Highest	9.03%		5.80%		1.31%		2.89%	1.08		11.97%		2.11%		2.32%
Upper Quartile	8.99%		5.39%		1.31%		2.51%	0.81		10.42%		1.65%		2.10%
Median	8.94%		4.98%		1.31%		2.14%	0.53		8.86%		1.19%		1.88%
Average	8.09%		4.56%		0.49%		1.99%	0.56		9.88%		0.83%		1.76%
Lower Quartile	7.62%		3.94%		0.08%		1.55%	0.30		8.84%		0.19%		1.48%
Lowest	6.29%		2.90%		-1.15%		0.96%	0.08		8.81%		-0.82%		1.07%
Number of participants	3		3		3			3		3		3		3

* Reasonable use of the survey may be made for purposes of comment and study provided that full acknowledgement is made to "Alexander Forbes Research & Product Development.

* While all possible care is taken in the compilation of the Survey, reliance is placed on information received from Investment Managers.

* The rankings and statistical information have been supplied for illustrative purposes only.

* Performance figures are shown gross of fees.

* Quantitative figures are calculated on 3 year performance returns.

* Performance should not be judged over a short period of time.

* Past history is not necessarily a guide to future performance.

S.A. LARGE MANAGER WATCH™

Objective - The portfolios are balanced (i.e. multiple asset class) portfolios, subject to the restrictions imposed by Regulation 28 of the Pension Funds Act and are confined to investing in South Africa only. These portfolios represent the best investment view of the largest managers of discretionary assets in South Africa, as determined under the survey rules imposed by Alexander Forbes Research & Product Development.

INVESTMENT DATA TO THE END OF JANUARY 2016																								
PERFORMANCE DATA																								
	Month			Quarter			Year to Date			1 Year			3 Years (p.a.)			5 Years (p.a.)			7 Years (p.a.)			10 Years (p.a.)		
	Portfolio	Rank	Benchmark	Portfolio	Rank	Benchmark	Portfolio	Rank	Benchmark	Portfolio	Rank	Benchmark	Portfolio	Rank	Benchmark	Portfolio	Rank	Benchmark	Portfolio	Rank	Benchmark	Portfolio	Rank	Benchmark
INVESTMENT MANAGERS																								
Absa Asset Management Domestic Balanced	-1.57%	6	-0.28%	-5.31%	2	-5.60%	-1.57%	6	-0.28%	-1.21%	4	-1.89%	8.00%	6	8.06%	*	*	*	*	*	*	*	*	*
Allan Gray	0.78%	1	-1.06%	-1.75%	1	-6.35%	0.78%	1	-1.06%	3.30%	2	-1.52%	10.80%	3	7.90%	12.44%	4	11.00%	13.77%	5	14.06%	13.69%	3	11.90%
Coronation	-2.49%	7	-1.15%	-7.99%	6	-6.26%	-2.49%	7	-1.15%	-2.77%	6	-2.38%	9.40%	4	8.00%	12.34%	5	11.11%	15.84%	3	14.29%	13.50%	4	12.19%
Foord Domestic Balanced	-1.43%	5	-1.03%	-5.93%	3	-6.60%	-1.43%	5	-1.03%	-0.38%	3	-1.54%	11.02%	2	8.62%	15.26%	1	11.52%	17.33%	1	13.95%	14.31%	1	11.41%
Investec Asset Management	-1.21%	4	-1.15%	-6.64%	5	-6.26%	-1.21%	4	-1.15%	4.02%	1	-2.38%	11.67%	1	8.00%	13.16%	2	11.11%	16.45%	2	14.29%	14.15%	2	12.19%
Oasis	-1.08%	3	-0.63%	-9.53%	7	-5.71%	-1.08%	3	-0.63%	-8.38%	7	-1.35%	4.21%	7	7.64%	9.65%	6	10.73%	12.37%	6	13.68%	11.22%	6	11.77%
Prudential Domestic Balanced	-0.44%	2	-0.72%	-6.40%	4	-5.58%	-0.44%	2	-0.72%	-1.35%	5	-1.49%	8.87%	5	8.33%	12.91%	3	11.31%	15.44%	4	14.26%	13.22%	5	12.13%

* Reasonable use of the survey may be made for purposes of comment and study provided that full acknowledgement is made to "Alexander Forbes Research & Product Development".

* While all possible care is taken in the compilation of the Survey, reliance is placed on information received from Investment Managers.

* The rankings and statistical information have been supplied for illustrative purposes only.

* Performance figures are shown gross of fees.

* Performance should not be judged over a short period of time.

* Past history is not necessarily a guide to future performance.

S.A. LARGE MANAGER WATCH™

Objective - The portfolios are balanced (i.e. multiple asset class) portfolios, subject to the restrictions imposed by Regulation 28 of the Pension Funds Act and are confined to investing in South Africa only. These portfolios represent the best investment view of the largest managers of discretionary assets in South Africa, as determined under the survey rules imposed by Alexander Forbes Research & Product Development.

INVESTMENT DATA TO THE END OF JANUARY 2016														
RISK VS RETURN														
	Calculated on 3 year performance returns							Calculated on 5 year performance returns						
	3 Year Return (p.a.)	Rank	Volatility	Rank	Active Return	Tracking Error	Sharpe Ratio	5 Year Return (p.a.)	Rank	Volatility	Rank	Active Return	Tracking Error	Sharpe Ratio
Absa Asset Management Domestic Balanced	8.00%	6	6.99%	1	-0.07%	2.20%	0.30	*		*		*	*	*
Allan Gray	10.80%	3	7.50%	2	2.90%	2.80%	0.65	12.44%	4	6.44%	1	1.43%	2.74%	1.03
Coronation	9.40%	4	7.90%	4	1.40%	2.44%	0.44	12.34%	5	7.16%	2	1.24%	2.05%	0.92
Foord Domestic Balanced	11.02%	2	7.81%	3	2.40%	3.47%	0.66	15.26%	1	7.57%	3	3.75%	3.14%	1.25
Investec Asset Management	11.67%	1	9.41%	7	3.68%	3.38%	0.61	13.16%	2	8.15%	6	2.05%	3.10%	0.91
Oasis	4.21%	7	9.20%	6	-3.42%	3.26%	-0.18	9.65%	6	8.09%	5	-1.08%	2.77%	0.48
Prudential Domestic Balanced	8.87%	5	8.26%	5	0.54%	1.39%	0.36	12.91%	3	7.91%	4	1.60%	1.58%	0.90
			<i>Lower volatility = higher ranking</i>							<i>Lower volatility = higher ranking</i>				
STATISTICS														
Range	7.46%							5.62%						
Highest	11.67%		9.41%		3.68%	3.47%	0.66	15.26%		8.15%		3.75%	3.14%	1.25
Upper Quartile	10.91%		8.73%		2.65%	3.32%	0.63	13.10%		8.04%		1.94%	3.02%	1.00
Median	8.22%		7.90%		1.40%	2.80%	0.44	11.24%		7.74%		1.52%	2.76%	0.91
Average	7.90%		8.15%		1.06%	2.70%	0.41	11.00%		7.55%		1.50%	2.56%	0.92
Lower Quartile	8.43%		7.66%		0.24%	2.32%	0.33	12.37%		7.26%		1.29%	2.22%	0.90
Lowest	4.21%		6.99%		-3.42%	1.39%	-0.18	9.65%		6.44%		-1.08%	1.58%	0.48
Number of participants	7		7		7	7	7	6		6		6	6	6

* Reasonable use of the survey may be made for purposes of comment and study provided that full acknowledgement is made to "Alexander Forbes Research & Product Development."

* While all possible care is taken in the compilation of the Survey, reliance is placed on information received from Investment Managers.

* The rankings and statistical information have been supplied for illustrative purposes only.

* Performance figures are shown gross of fees.

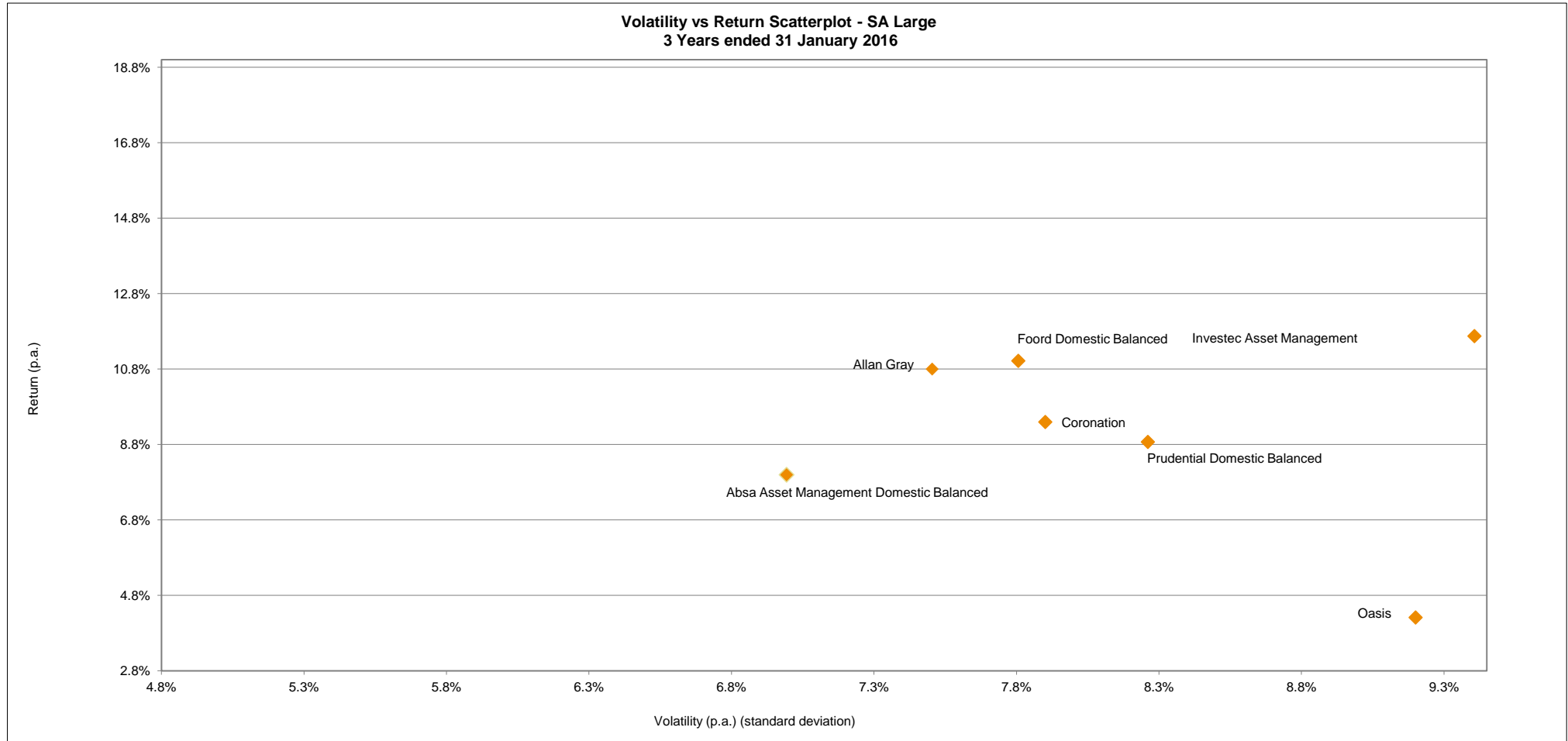
* Quantitative figures are calculated on 3 year performance returns.

* Performance should not be judged over a short period of time.

* Past history is not necessarily a guide to future performance.

S.A. LARGE MANAGER WATCH™

Volatility vs Return Scatterplot - SA Large
3 Years ended 31 January 2016



* Reasonable use of the survey may be made for purposes of comment and study provided that full acknowledgement is made to "Alexander Forbes Research & Product Development".

** Please see final page for Disclaimers and Glossary **

S.A. LARGE MANAGER WATCH™

Objective - The portfolios are balanced (i.e. multiple asset class) portfolios, subject to the restrictions imposed by Regulation 28 of the Pension Funds Act and are confined to investing in South Africa only. These statistics represent the various categories that portfolios are represented in but only for those managers that are open to new investments.

LOCAL INVESTABLE PERFORMANCE DATA ANALYSIS TO THE END OF JANUARY 2016

	Return - Month	Return - Quarter	Return - Year to Date	Return - 1 Year	Return - 3 Years (p.a.)	Return - 5 Years (p.a.)	Return - 7 Years (p.a.)	Return - 10 Years (p.a.)
SA BIV								
High	0.78%	-1.75%	0.78%	4.02%	11.67%	15.26%	17.33%	14.31%
Upper Quartile	-0.18%	-4.56%	-0.18%	0.30%	10.41%	12.93%	15.43%	13.59%
Median	-0.72%	-5.58%	-0.72%	-1.49%	8.33%	11.31%	14.26%	12.13%
Average	-0.63%	-5.71%	-0.63%	-1.35%	7.64%	10.73%	13.68%	11.77%
Asset-weighted Average	-0.46%	-3.82%	-0.46%	0.87%	8.28%	10.50%	12.29%	10.17%
Lower Quartile	-1.26%	-6.52%	-1.26%	-1.87%	6.74%	10.68%	13.31%	11.56%
Low	-1.57%	-9.53%	-1.57%	-8.38%	4.21%	9.65%	12.37%	10.41%
Range	2.35%	7.78%	2.35%	12.41%	7.46%	5.62%	4.95%	3.90%
Number of participants	11	11	11	11	11	10	10	10
SA Conservative								
High	1.02%	1.64%	1.02%	8.39%	9.03%	11.97%	13.31%	12.09%
Upper Quartile	0.98%	-0.74%	0.98%	4.39%	8.99%	10.42%	12.07%	11.47%
Median	0.94%	-3.13%	0.94%	0.40%	8.94%	8.86%	10.84%	10.85%
Average	0.90%	-1.66%	0.90%	2.84%	8.09%	9.88%	11.20%	11.16%
Asset-weighted Average	0.85%	-2.01%	0.85%	2.02%	7.50%	9.47%	10.99%	10.93%
Lower Quartile	0.84%	-3.31%	0.84%	0.06%	7.62%	8.84%	10.15%	10.69%
Low	0.75%	-3.49%	0.75%	-0.28%	6.29%	8.81%	9.47%	10.54%
Range	0.27%	5.13%	0.27%	8.67%	2.74%	3.16%	3.84%	1.55%
Number of participants	3	3	3	3	3	3	3	3
SA LMW								
High	0.78%	-1.75%	0.78%	4.02%	11.67%	15.26%	17.33%	14.31%
Upper Quartile	-0.60%	-5.47%	-0.60%	2.38%	10.96%	13.16%	16.45%	14.15%
Median	-1.15%	-6.26%	-1.15%	-2.38%	8.00%	11.11%	14.29%	12.19%
Average	-0.82%	-6.09%	-0.82%	-1.28%	7.77%	10.97%	14.02%	11.87%
Asset-weighted Average	-0.31%	-3.39%	-0.31%	1.20%	8.01%	9.95%	11.48%	10.38%
Lower Quartile	-1.37%	-6.58%	-1.37%	-1.31%	8.22%	12.44%	13.77%	13.22%
Low	-1.57%	-9.53%	-1.57%	-8.38%	4.21%	9.65%	12.37%	11.22%
Range	2.35%	7.78%	2.35%	12.41%	7.46%	5.62%	4.95%	3.09%
Number of participants	6	6	6	6	6	6	6	6

**** Median Compounded : The longer term median returns reflected are calculated by compounding the monthly median returns over the various periods.**

* Reasonable use of the survey may be made for purposes of comment and study provided that full acknowledgement is made to "Alexander Forbes Research & Product Development".

** Please see final page for Disclaimers and Glossary **

S.A. LARGE MANAGER WATCHTM

Objective - The portfolios are balanced (i.e. multiple asset class) portfolios, subject to the restrictions imposed by Regulation 28 of the Pension Funds Act and are confined to investing in South Africa only. These statistics represent the various categories that portfolios are represented in, regardless of whether these asset managers are open to new investments or not.

LOCAL NON INVESTABLE PERFORMANCE DATA ANALYSIS TO THE END OF JANUARY 2016								
	Return - Month	Return - Quarter	Return - Year to Date	Return - 1 Year	Return - 3 Years (p.a.)	Return - 5 Years (p.a.)	Return - 7 Years (p.a.)	Return - 10 Years (p.a.)
SA BIV								
Median	-0.90%	-5.61%	-0.90%	-1.27%	8.54%	11.43%	14.37%	12.20%
Average	-0.78%	-5.89%	-0.78%	-1.48%	7.74%	10.78%	13.73%	11.79%
Asset-weighted Average	-0.92%	-5.31%	-0.92%	0.35%	10.03%	12.81%	15.26%	12.70%
Number of participants	12	12	12	12	12	11	11	11
SA Conservative								
Median	0.94%	-3.13%	0.94%	0.40%	8.94%	8.86%	10.84%	10.85%
Average	0.90%	-1.66%	0.90%	2.84%	8.09%	9.88%	11.20%	11.16%
Asset-weighted Average	0.85%	-2.01%	0.85%	2.02%	7.50%	9.47%	10.99%	10.93%
Number of participants	3	3	3	3	3	3	3	3
SA LMW								
Median	-1.21%	-6.19%	-1.21%	-2.19%	8.22%	11.24%	14.40%	12.27%
Average	-1.06%	-6.35%	-1.06%	-1.52%	7.90%	11.00%	14.06%	11.90%
Asset-weighted Average	-0.89%	-5.24%	-0.89%	0.56%	9.78%	13.04%	15.44%	13.75%
Number of participants	7	7	7	7	7	6	6	6

**** Median Compounded : The longer term median returns reflected are calculated by compounding the monthly median returns over the various periods.**

* Reasonable use of the survey may be made for purposes of comment and study provided that full acknowledgement is made to "Alexander Forbes Research & Product Development".

** Please see final page for Disclaimers and Glossary **

GLOBAL MANAGER WATCH™ - DYNAMIC

Objective - The portfolios are balanced (i.e. multiple asset class) portfolios, subject to the restrictions imposed by Regulation 28 of the Pension Funds Act and aim to maximize long-term (i.e. more than 5 years) capital growth. This may lead to volatility of returns in the short-term (i.e. less than one year).

GENERAL INFORMATION								
	GIPS™ (Verified/ Compliant)	Portfolio Type	Notes	Regulation 28 Compliant Certification (Y/N)	Benchmark Description	Admin - efficiency : Date data submitted	No.of funds in composite	Portfolio Size (R m)
INVESTMENT MANAGERS								
Allan Gray Life Global Absolute Portfolio	V	Pooled		Y	Global LMW Average	09 February 2016	n/a	3 260
Coronation (Managed)	V	Pooled	Non Investable	Y	Global LMW Average	10 February 2016	n/a	12 224
Investec Asset Management Managed	V	Pooled		Y	Global LMW Median	12 February 2016	n/a	8 778
Investec Opportunity Composite	V	Pooled		Y	CPI + 6%	12 February 2016	n/a	46 541
Investment Solutions Entrepreneur		Pooled multi-manager		Y	FTSE/JSE SWIX 46.50%, MSCI AC World 21.00%, BEASSA All Bond Index 11.00%, TAA Composite 7.50%, FTSE/JSE SA Property 7.00%, MSCI EFM Africa 5.00%, Citi WGBI 2.00%	12 February 2016	n/a	791
OMIG MacroSolutions (Profile Edge28)	V	Pooled		Y	This fund holds no specific benchmark. The asset allocation is aggressively managed seeking to maximise short-term opportunities by actively switching between asset classes and asset sectors.	09 February 2016	n/a	2 141
Old Mutual Multi Managers Aggressive		Pooled multi-manager	The benchmark was 57% SWIX, 5% Property, 8% SteFI, 25% MSCI World Index and 5% All Africa Top 100 (excl SA) until June 2014	Y	50% SWIX , 10% Property, 17% SteFI, 20% MSCI World Index, 3% All Africa Top 100 (excl SA)	09 February 2016	n/a	2 566
			<i>This includes multi-managers thus must be noted as possible "double-counting"</i>					
TOTAL								76 300

* Reasonable use of the survey may be made for purposes of comment and study provided that full acknowledgement is made to "Alexander Forbes Research & Product Development".

* While all possible care is taken in the compilation of the Survey, reliance is placed on information received from Investment Managers.

* The rankings and statistical information have been supplied for illustrative purposes only.

* Performance figures are shown gross of fees.

* Performance should not be judged over a short period of time.

* Past performance is not necessarily a guide to future performance.

GLOBAL MANAGER WATCH™ - DYNAMIC

Objective - The portfolios are balanced (i.e. multiple asset class) portfolios with exposure to both global and local assets, subject to the restrictions imposed by Regulation 28 of the Pension Funds Act and aim to maximize long-term (i.e. more than 5 years) capital returns. This may lead to volatility of returns in the short-term (i.e. less than one year).

INVESTMENT DATA TO THE END OF JANUARY 2016																								
PERFORMANCE DATA																								
	Month			Quarter			Year to Date			1 Year			3 Years (p.a.)			5 Years (p.a.)			7 Years (p.a.)			10 Years (p.a.)		
	Portfolio	Rank	Benchmark	Portfolio	Rank	Benchmark	Portfolio	Rank	Benchmark	Portfolio	Rank	Benchmark	Portfolio	Rank	Benchmark	Portfolio	Rank	Benchmark	Portfolio	Rank	Benchmark	Portfolio	Rank	Benchmark
INVESTMENT MANAGERS																								
Allan Gray Life Global Absolute Portfolio	0.25%	2	-1.71%	3.21%	1	-3.10%	0.25%	2	-1.71%	10.64%	3	3.26%	11.84%	6	11.04%	11.64%	7	13.15%	11.36%	7	14.76%	13.79%	3	*
Coronation (Managed)	-3.07%	7	-1.50%	-4.97%	7	-2.94%	-3.07%	7	-1.50%	-0.18%	7	3.35%	11.86%	5	10.86%	14.70%	3	13.06%	17.30%	1	14.69%	14.81%	1	12.37%
Investec Asset Management Managed	1.40%	1	-1.74%	3.03%	2	-3.03%	1.40%	1	-1.74%	16.19%	1	4.76%	16.30%	1	11.85%	16.62%	1	13.66%	16.35%	2	15.08%	13.43%	4	12.65%
Investec Opportunity Composite	-0.53%	3	0.74%	0.41%	3	2.07%	-0.53%	3	4.22%	11.39%	2	11.23%	12.37%	4	11.31%	14.87%	2	11.54%	15.72%	4	11.35%	13.84%	2	12.16%
Investment Solutions Entrepreneur	-0.57%	4	-1.67%	-2.49%	4	-3.15%	-0.57%	4	-1.67%	3.46%	6	5.04%	11.68%	7	12.91%	13.08%	6	15.06%	15.09%	6	16.06%	12.37%	7	13.08%
OMIG MacroSolutions (Profile Edge28)	-2.35%	5	*	-3.81%	6	*	-2.35%	5	*	6.28%	5	*	13.87%	2	*	14.47%	4	*	15.87%	3	*	12.91%	5	*
Old Mutual Multi Managers Aggressive	-2.96%	6	-2.27%	-2.83%	5	-3.42%	-2.96%	6	-2.27%	6.77%	4	5.15%	13.84%	3	15.38%	14.46%	5	16.18%	15.49%	5	17.04%	12.62%	6	13.54%

* Reasonable use of the survey may be made for purposes of comment and study provided that full acknowledgement is made to "Alexander Forbes Research & Product Development".

* While all possible care is taken in the compilation of the Survey, reliance is placed on information received from Investment Managers.

* The rankings and statistical information have been supplied for illustrative purposes only.

* Reasonable use of the survey may be made for purposes of comment and study provided that full acknowledgement is made to "Alexander Forbes Research & Product Development".

* Performance should not be judged over a short period of time.

* Past history is not necessarily a guide to future performance.

GLOBAL MANAGER WATCH™ - DYNAMIC

Objective - The portfolios are balanced (i.e. multiple asset class) portfolios with exposure to both global and local assets, subject to the restrictions imposed by Regulation 28 of the Pension Funds Act and aim to maximize long-term (i.e. more than 5 years) capital returns. This may lead to volatility of returns in the short-term (i.e. less than one year).

INVESTMENT DATA TO THE END OF JANUARY 2016														
RISK VS RETURN														
	Calculated on 3 year performance returns						Calculated on 5 year performance returns							
	3 Year Return (p.a.)	Rank	Volatility	Rank	Active Return	Tracking Error	Sharpe Ratio	5 Year Return (p.a.)	Rank	Volatility	Rank	Active Return	Tracking Error	Sharpe Ratio
Allan Gray Life Global Absolute Portfolio	11.84%	6	4.77%	1	0.80%	5.32%	1.25	11.64%	7	4.66%	1	-1.51%	5.83%	1.26
Coronation (Managed)	11.86%	5	8.50%	7	1.00%	2.38%	0.70	14.70%	3	7.75%	7	1.64%	2.07%	1.15
Investec Asset Management Managed	16.30%	1	6.75%	3	4.45%	3.56%	1.54	16.62%	1	6.56%	4	2.96%	3.46%	1.65
Investec Opportunity Fund	12.37%	4	6.18%	2	1.06%	6.32%	1.05	14.87%	2	5.56%	2	3.33%	5.64%	1.64
Investment Solutions Entrepreneur	11.68%	7	7.05%	4	-1.23%	2.35%	0.82	13.08%	6	6.36%	3	-1.98%	2.29%	1.15
OMIG MacroSolutions (Profile Edge28)	13.87%	2	7.71%	6	*	*	1.03	14.47%	4	7.15%	6	*	*	1.22
Old Mutual Multi Managers Aggressive	13.84%	3	7.21%	5	-1.54%	2.98%	1.10	14.46%	5	6.73%	5	-1.73%	2.91%	1.29
			Lower volatility = higher ranking							Lower volatility = higher ranking				
STATISTICS														
Range	4.61%							4.99%						
Highest	16.30%		8.50%		4.45%	6.32%	1.54	16.62%		7.75%		3.33%	5.83%	1.65
Upper Quartile	13.86%		7.46%		1.05%	4.88%	1.17	14.78%		6.94%		2.63%	5.10%	1.46
Median	14.00%		7.05%		0.90%	3.27%	1.05	15.06%		6.56%		0.06%	3.18%	1.26
Average	13.26%		6.88%		0.76%	3.82%	1.07	14.33%		6.39%		0.45%	3.70%	1.34
Lower Quartile	11.85%		6.46%		-0.72%	2.53%	0.93	13.77%		5.96%		-1.67%	2.45%	1.18
Lowest	11.68%		4.77%		-1.54%	2.35%	0.70	11.64%		4.66%		-1.98%	2.07%	1.15
Number of participants	7		7		6	6	7	7		7		6	6	7

* Reasonable use of the survey may be made for purposes of comment and study provided that full acknowledgement is made to "Alexander Forbes Research & Product Development.

* While all possible care is taken in the compilation of the Survey, reliance is placed on information received from Investment Managers.

* The rankings and statistical information have been supplied for illustrative purposes only.

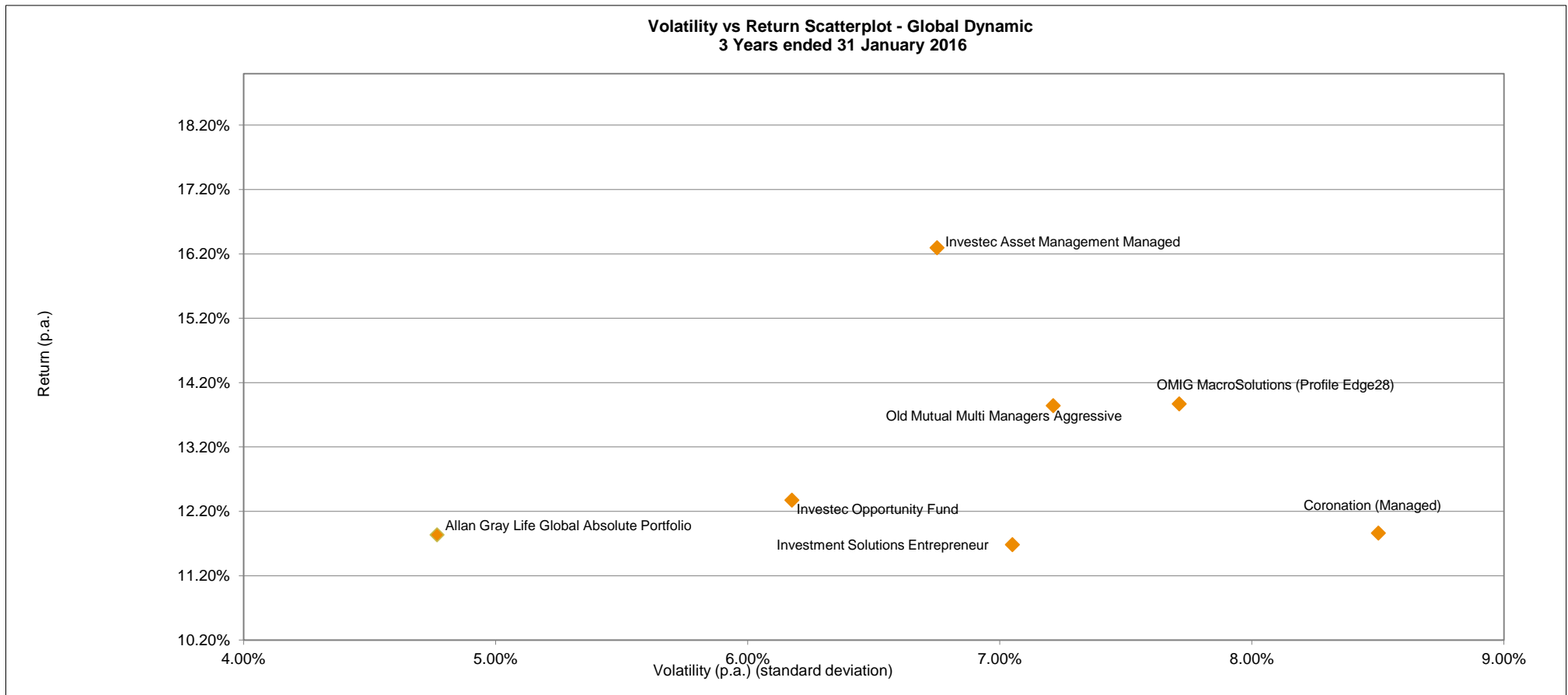
* Performance figures are shown gross of fees.

* Quantitative figures are calculated on 3 year performance returns.

* Performance should not be judged over a short period of time.

* Past history is not necessarily a guide to future performance.

GLOBAL MANAGER WATCH™ DYNAMIC



* Reasonable use of the survey may be made for purposes of comment and study provided that full acknowledgement is made to "Alexander Forbes Research & Product Development".

** Please see final page for Disclaimers and Glossary **

GLOBAL MANAGER WATCH™ - BEST INVESTMENT VIEW

Objective - The portfolios are balanced (i.e. multiple asset class) portfolios, subject to the restrictions imposed by Regulation 28 of the Pension Funds Act and represent the managers' best investment view.

GENERAL INFORMATION								
	GIPS™ (Verified/ Compliant)	Portfolio Type	Notes	Regulation 28 Compliant Certification (Y/N)	Benchmark Description	Admin - efficiency : Date data submitted	No.of funds in composite	Portfolio Size (R m)
INVESTMENT MANAGERS								
Absa Asset Management Global Balanced	V	Pooled		Y	AF Large Manager Watch Median	09 February 2016	6	6 446
Allan Gray	V	Segregated		Y	Global LMW Average	09 February 2016	19	77 632
Cadiz Global Balanced	V	Segregated		Y	Global LMW Median	12 February 2016	2	348
Coronation	V	Segregated	Non Investable	Y	Global LMW Median	10 February 2016	15	44 923
Foord Global Balanced	C	Segregated		Y	55% ALSI, 9% MSCI, 6% CITI, 5% PROP, 20% ALBI, 5% STFCAD	12 February 2016	13	72 076
Investec Asset Management	V	Segregated		Y	Global LMW Median	12 February 2016	29	60 920
Investment Solutions (Performer)		Pooled multi-manager		Y	Alexander Forbes Investable Global Large Manager™ Watch Median	12 February 2016	n/a	82 498
Investment Solutions (Spectrum)		Pooled multi-manager		Y	Alexander Forbes Investable Global Large Manager™ Watch Average	12 February 2016	n/a	2 318
Nedgroup Investments XS Diversified Fund of Funds	n/a	Pooled		Y	CPI + 5%	12 February 2016	n/a	2 522
Oasis	V	Segregated		Y	Global BIV Average	12 February 2016	7	1 210
OMIG MacroSolutions	V	Segregated		Y	The benchmark for our full discretionary funds is calculated in-house, using FTSE free market indices and estimated peer group weightings.	09 February 2016	3	3 658
OMIG MacroSolutions (Profile Balanced)	V	Pooled		Y	45% FTSE/JSE Shareholder Wghted Index + 20% MSCI ACWI Free Index (R) + 15% BEASSA Index + 7.5%Stefi 3 Months + 5% 50/50 JPM Intl Bond Index/Barclay Cap Global Bnd Agg Index (R) + 5% FTSE/JSE SA Quoted Prop + 2.5% SPDR Gold Trust ETF	09 February 2016	n/a	1 156
Prescient Global Balanced	V	Segregated		Y	Inflation	12 February 2016	2	566
Prudential Global Balanced	V	Segregated		Y	The total fund is benchmarked against the total MEDIAN performance of the Global LMW participants.	03 February 2016	10	28 993
PSG Balanced Fund				Y	The "Performance Target" is CPI + 5%. The Benchmark is 60% JSE ALSI, 10% All Bond Index, 10% STEFI Cash, 12% MSCI World Index, 4% USD Month Deposit Rate, 4% JPM GBI (all in ZAR)	11 February 2016	n/a	5 100
MMI - Global Balanced	V	Segregated		Y	Global LMW Median	12 February 2016	6	4 564
Momentum MoM Enhanced Factor 7		Pooled		Y	55.00% FTSE/JSE SWIX,10.00% FTSE/JSE SA Listed Property Index,5.00% ALBI,5.00% Barclays BEASSA SA Government ILB Index,20.00% MSCI All Countries World Index, 5.00% Citigroup World Government Bond Index	02 February 2016	n/a	15 228
RECM	V	Pooled		Y	CPI + 5%	10 February 2016	n/a	221
Rezco Value Trend		Pooled		Y	FTSE/JSE All Share	00 January 1900	n/a	5 739
SIM Global Unique	V	Segregated		Y	Global LMW Median	04 February 2016	3	12 760
Stanlib AM	V	Segregated		Y	Forbes MW - Global Best Invest	12 February 2016	10	2 783
Old Mutual Multi-Managers Inflation Plus 5-7%		Pooled multi-manager		Y	CPI + 6	09 February 2016	n/a	5 503
Old Mutual Multi Managers Managed		Pooled multi-manager		Y	Median of Alexander Forbes Global Large Manager Watch	09 February 2016	n/a	2 536
			<i>This includes multi-managers thus must be noted as possible "double-counting"</i>					
TOTAL								439 687

* Reasonable use of the survey may be made for purposes of comment and study provided that full acknowledgement is made to "Alexander Forbes Research & Product Development".

* While all possible care is taken in the compilation of the Survey, reliance is placed on information received from Investment Managers.

* The rankings and statistical information have been supplied for illustrative purposes only.

* Performance figures are shown gross of fees.

* Performance should not be judged over a short period of time.

* Past performance is not necessarily a guide to future performance.

GLOBAL MANAGER WATCH™ - BEST INVESTMENT VIEW

Objective - The portfolios are balanced (i.e. multiple asset class) portfolios with exposure to global and local assets, subject to the restrictions imposed by Regulation 28 of the Pension Funds Act and represent the managers' best investment view.

INVESTMENT DATA TO THE END OF JANUARY 2016																								
PERFORMANCE DATA																								
	Month			Quarter			Year to Date			1 Year			3 Years (p.a.)			5 Years (p.a.)			7 Years (p.a.)			10 Years (p.a.)		
	Portfolio	Rank	Benchmark	Portfolio	Rank	Benchmark	Portfolio	Rank	Benchmark	Portfolio	Rank	Benchmark	Portfolio	Rank	Benchmark	Portfolio	Rank	Benchmark	Portfolio	Rank	Benchmark	Portfolio	Rank	Benchmark
INVESTMENT MANAGERS																								
Absa Asset Management Global Balanced	-1.94%	10	-1.74%	-2.49%	5	-3.03%	-1.94%	10	-1.74%	3.83%	15	4.76%	10.43%	18	11.85%	12.68%	15	*	*	*	*	*	*	*
Allan Gray	-0.16%	2	-1.71%	1.18%	1	-3.10%	-0.16%	2	-1.71%	10.19%	2	3.26%	13.86%	2	11.04%	14.74%	5	13.15%	14.41%	13	14.76%	14.23%	4	12.41%
Cadiz Global Balanced	-2.29%	15	-1.74%	-3.40%	14	-3.03%	-2.29%	15	-1.74%	-0.30%	22	4.76%	6.57%	20	11.85%	9.90%	16	13.66%	12.42%	15	15.08%	10.33%	15	12.65%
Coronation	-3.90%	23	-1.74%	-4.67%	21	-3.03%	-3.90%	23	-1.74%	2.48%	19	4.76%	12.71%	7	11.85%	14.60%	7	13.66%	16.82%	2	15.08%	14.28%	3	12.65%
Foord Global Balanced	-2.57%	18	-1.03%	-2.74%	8	-4.29%	-2.57%	18	-1.03%	6.30%	6	3.13%	12.63%	8	11.10%	15.61%	1	13.22%	16.51%	3	14.37%	14.30%	2	12.03%
Investec Asset Management	-1.54%	8	-1.74%	-2.85%	11	-3.03%	-1.54%	8	-1.74%	9.96%	3	4.76%	14.82%	1	11.85%	15.50%	2	13.66%	17.38%	1	15.08%	15.13%	1	12.65%
Investment Solutions (Performer)	-1.70%	9	-1.74%	-2.39%	4	-3.03%	-1.70%	9	-1.74%	6.60%	5	4.84%	13.28%	4	11.87%	15.04%	4	13.97%	16.02%	6	15.34%	13.79%	5	13.22%
Investment Solutions (Spectrum)	-1.27%	7	-1.50%	-2.91%	12	-2.93%	-1.27%	7	-1.50%	3.92%	14	3.18%	11.09%	17	10.82%	13.40%	11	13.31%	14.94%	9	14.73%	12.64%	8	12.68%
Nedgroup Investments XS Diversified Fund of Funds	-1.24%	6	0.67%	-2.76%	9	1.85%	-1.24%	6	0.67%	5.43%	10	10.48%	11.71%	11	10.58%	*	*	*	*	*	*	*	*	*
Oasis	-1.95%	11	-1.75%	-4.08%	17	-2.97%	-1.95%	11	-1.75%	2.07%	20	3.73%	11.30%	15	10.82%	13.50%	9	12.86%	14.10%	14	14.88%	11.96%	11	12.54%
OMIG MacroSolutions	-2.13%	13	-0.94%	-4.17%	18	-1.70%	-2.13%	13	-0.94%	4.03%	13	6.35%	11.35%	14	13.33%	13.07%	13	14.36%	14.59%	10	15.49%	12.24%	9	13.15%
OMIG MacroSolutions (Profile Balanced)	-2.03%	12	-0.68%	-3.73%	16	-2.16%	-2.03%	12	-0.68%	4.62%	11	5.58%	11.41%	13	13.32%	13.17%	12	15.03%	14.43%	12	15.82%	11.62%	14	13.32%
Prescient Global Balanced	-2.41%	17	0.26%	-5.28%	22	0.61%	-2.41%	17	0.26%	1.56%	21	5.14%	7.86%	19	5.05%	*	*	*	*	*	*	*	*	*
Prudential Global Balanced	-1.01%	5	-1.99%	-3.00%	13	-3.33%	-1.01%	5	-1.99%	5.86%	7	4.08%	12.92%	6	11.40%	14.73%	6	13.31%	16.05%	5	14.88%	13.65%	6	12.54%
PSG Balanced Fund	-2.59%	19	0.65%	-4.59%	20	1.81%	-2.59%	19	0.65%	3.72%	16	10.22%	13.01%	5	10.82%	*	*	*	*	*	*	*	*	*
MMI - Global Balanced	-2.27%	14	-1.74%	-2.55%	6	-3.03%	-2.27%	14	-1.74%	7.56%	4	4.76%	12.51%	9	11.85%	13.46%	10	13.66%	14.45%	11	15.08%	11.96%	10	12.65%
Momentum MoM Enhanced Factor 7	-2.59%	20	-2.16%	-4.23%	19	-3.79%	-2.59%	20	-2.16%	4.39%	12	4.76%	13.59%	3	14.03%	15.39%	3	15.74%	16.18%	4	16.45%	13.14%	7	13.23%
RECM	0.70%	1	0.66%	-5.92%	23	1.84%	0.70%	1	0.66%	-18.02%	23	11.61%	-2.65%	21	11.98%	2.60%	17	12.91%	6.45%	16	13.01%	7.50%	16	13.99%
Rezco Value Trend	-2.67%	21	-2.99%	0.23%	2	-8.33%	-2.67%	21	-2.99%	13.13%	1	-1.06%	*	*	*	*	*	*	*	*	*	*	*	*
SIM Global Unique	-0.50%	3	-1.74%	-2.83%	10	-3.03%	-0.50%	3	-1.74%	3.44%	18	4.76%	11.28%	16	11.85%	12.96%	14	13.66%	15.01%	8	15.08%	11.79%	13	12.65%
Stanlib AM	-0.88%	4	-1.99%	-0.79%	3	-3.33%	-0.88%	4	-1.99%	5.86%	8	4.08%	11.68%	12	11.40%	14.56%	8	13.31%	15.68%	7	14.88%	11.92%	12	12.54%
Old Mutual Multi-Managers Inflation Plus 5-7%	-3.11%	22	0.75%	-2.66%	7	2.08%	-3.11%	22	0.75%	5.52%	9	*	*	*	*	*	*	*	*	*	*	*	*	*
Old Mutual Multi Managers Managed	-2.37%	16	-1.94%	-3.58%	15	-2.93%	-2.37%	16	-1.94%	3.69%	17	4.86%	12.21%	10	11.85%	*	*	*	*	*	*	*	*	*

* Reasonable use of the survey may be made for purposes of comment and study provided that full acknowledgement is made to "Alexander Forbes Research & Product Development".

* While all possible care is taken in the compilation of the Survey, reliance is placed on information received from Investment Managers.

* The rankings and statistical information have been supplied for illustrative purposes only.

* Reasonable use of the survey may be made for purposes of comment and study provided that full acknowledgement is made to "Alexander Forbes Research & Product Development".

* Performance should not be judged over a short period of time.

* Past history is not necessarily a guide to future performance.

GLOBAL MANAGER WATCH™ - BEST INVESTMENT VIEW

Objective - The portfolios are balanced (i.e. multiple asset class) portfolios with exposure to global and local assets, subject to the restrictions imposed by Regulation 28 of the Pension Funds Act and represent the managers' best investment view.

INVESTMENT DATA TO THE END OF JANUARY 2016														
RISK VS RETURN														
	Calculated on 3 year performance returns						Calculated on 5 year performance returns							
	3 Year Return (p.a.)	Rank	Volatility	Rank	Active Return	Tracking Error	Sharpe Ratio	5 Year Return (p.a.)	Rank	Volatility	Rank	Active Return	Tracking Error	Sharpe Ratio
Absa Asset Management Global Balanced	10.43%	18	6.48%	3	-1.42%	1.56%	0.70	*		*		*	*	*
Allan Gray	13.86%	2	7.10%	9	2.83%	2.80%	1.12	14.74%	5	6.26%	3	1.59%	2.95%	1.43
Cadiz Global Balanced	6.57%	20	7.17%	12	-5.28%	3.65%	0.10	9.90%	15	6.93%	11	-3.76%	3.32%	0.60
Coronation	12.71%	7	7.85%	19	0.86%	2.35%	0.87	14.60%	7	7.15%	14	0.94%	2.07%	1.23
Foord Global Balanced	12.63%	8	7.43%	14	1.53%	3.68%	0.91	15.61%	1	7.08%	13	2.40%	3.17%	1.39
Investec Asset Management	14.82%	1	8.23%	20	2.97%	2.85%	1.09	15.50%	2	7.35%	15	1.84%	2.71%	1.32
Investment Solutions (Performer)	13.28%	4	7.03%	7	1.41%	1.21%	1.05	15.04%	4	6.36%	5	1.07%	1.18%	1.46
Investment Solutions (Spectrum)	11.09%	17	6.89%	5	0.28%	0.51%	0.76	13.40%	11	6.24%	2	0.09%	0.67%	1.22
Nedgroup Investments XS Diversified Fund of Funds	11.71%	11	6.32%	2	1.12%	6.40%	0.92	*	*	*	*	*	*	*
Oasis	11.30%	15	7.82%	18	0.48%	2.44%	0.69	13.50%	9	6.88%	9	0.64%	2.20%	1.12
OMIG MacroSolutions	11.35%	14	6.99%	6	-1.98%	1.77%	0.78	13.07%	13	6.60%	8	-1.29%	1.80%	1.10
OMIG MacroSolutions (Profile Balanced)	11.41%	13	7.14%	11	-1.91%	2.29%	0.77	13.17%	12	6.59%	7	-1.86%	2.24%	1.12
Prescient Global Balanced	7.86%	19	7.50%	16	2.81%	7.58%	0.26	*		*		*	*	*
Prudential Global Balanced	12.92%	6	7.22%	13	1.52%	1.30%	0.97	14.73%	6	6.88%	10	1.42%	1.42%	1.30
PSG Balanced Fund	13.01%	5	7.12%	10	2.20%	7.22%	1.00	*		*		*	*	*
MMI - Global Balanced	12.51%	9	7.07%	8	0.66%	1.41%	0.94	13.46%	10	6.33%	4	-0.20%	1.38%	1.21
Momentum MoM Enhanced Factor 7	13.59%	3	7.67%	17	-0.44%	1.60%	1.00	15.39%	3	7.02%	12	-0.35%	1.52%	1.37
RECM	-2.65%	21	11.42%	21	-14.63%	11.26%	-0.75	2.60%	16	9.50%	16	-10.31%	9.40%	-0.33
SIM Global Unique	11.28%	16	6.54%	4	-0.57%	1.60%	0.82	12.96%	14	6.41%	6	-0.70%	1.49%	1.12
Stanlib AM	11.68%	12	6.12%	1	0.29%	2.26%	0.95	14.56%	8	6.14%	1	1.25%	2.40%	1.43
Old Mutual Multi Managers Managed	12.21%	10	7.49%	15	0.36%	1.23%	0.84	*		*		*	*	*
			Lower volatility = higher ranking							Lower volatility = higher ranking				
STATISTICS														
Range	17.47%							13.02%						
Highest	14.82%		11.42%		2.97%	11.26%	1.12	15.61%		9.50%		2.40%	9.40%	1.46
Upper Quartile	12.94%		7.59%		1.52%	3.65%	0.97	14.82%		7.03%		1.29%	2.77%	1.37
Median	8.22%		7.14%		0.48%	2.29%	0.87	11.24%		6.74%		0.36%	2.13%	1.23
Average	7.90%		7.40%		-0.33%	3.19%	0.75	11.00%		6.86%		-0.45%	2.50%	1.13
Lower Quartile	11.28%		6.99%		-0.57%	1.56%	0.76	13.14%		6.35%		-0.85%	1.48%	1.12
Lowest	-2.65%		6.12%		-14.63%	0.51%	-0.75	2.60%		6.14%		-10.31%	0.67%	-0.33
Number of participants	21		21		21		21	16		16		16		16

* Reasonable use of the survey may be made for purposes of comment and study provided that full acknowledgement is made to "Alexander Forbes Research & Product Development.

* While all possible care is taken in the compilation of the Survey, reliance is placed on information received from Investment Managers.

* The rankings and statistical information have been supplied for illustrative purposes only.

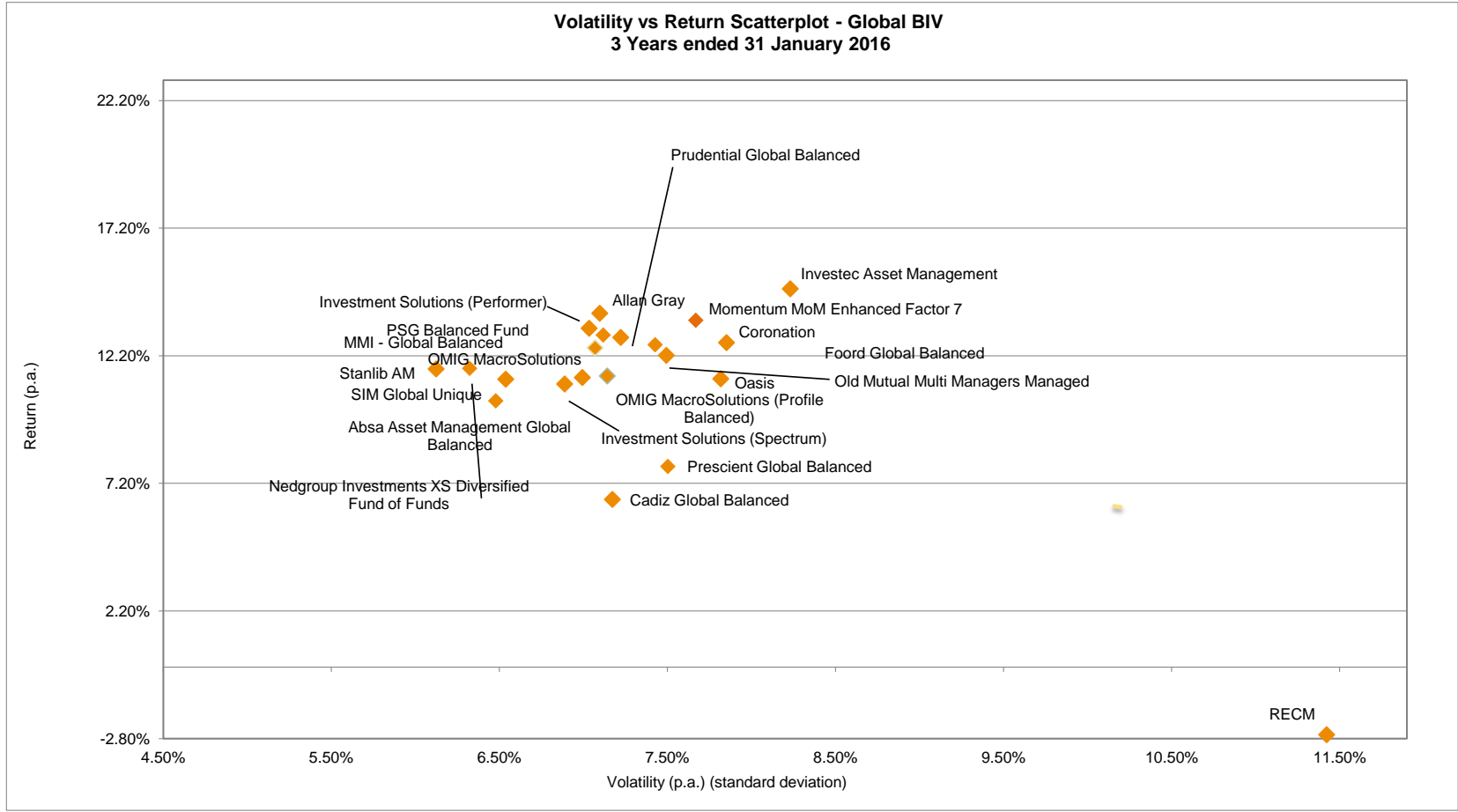
* Performance figures are shown gross of fees.

* Quantitative figures are calculated on 3 year performance returns.

* Performance should not be judged over a short period of time.

* Past history is not necessarily a guide to future performance.

GLOBAL MANAGER WATCH™ BEST INVESTMENT VIEW



* Reasonable use of the survey may be made for purposes of comment and study provided that full acknowledgement is made to "Alexander Forbes Research & Product Development".

** Please see final page for Disclaimers and Glossary **



GLOBAL MANAGER WATCH™ - CONSERVATIVE

Objective - The portfolios are balanced (i.e. multiple asset class) portfolios with exposure to both global and local assets, subject to the restrictions imposed by Regulation 28 of the Pension Funds Act and aim to minimise the probability of short-term (i.e. less than one year) capital loss while targeting long-term (i.e. more than five years) capital return..

GENERAL INFORMATION									
	GIPS™ (Verified/ Compliant)	Portfolio Type	Notes	Regulation 28 Compliant Certification (Y/N)	Benchmark Description	Admin - efficiency : Date data submitted	No.of funds in composite	Portfolio Size (R m)	
INVESTMENT MANAGERS									
Allan Gray Life Global Stable Portfolio	V	Pooled		Y	Alexander Forbes 3 month Deposit Index plus 2%	09 February 2016	n/a	5 909	
Foord Conservative Balanced	C	Pooled		Y	CPI+4%	12 February 2016	1	1 584	
Investec Cautious Managed Fund	V	Pooled		Y	GLMW Median	12 February 2016	1	10 092	
Investment Solutions (Conserver)		Pooled multi-manager		Y	FTSE/JSE SWIX 32.00%, BEASSA All Bond Index 24.00%, STeFI Call Deposit Index 24.00%, MSCI AC World 7.90%, Citi WGBI 6.00%, US Treasury Bill 3.05%, French Treasury Bill 3.05%	12 February 2016	n/a	3 071	
OMIG MacroSolutions (Profile Capital)	V	Pooled		Y	The Profile Capital Portfolio is continually evaluated against its' performance benchmarks, seeking to outperform the returns which would be generated by adopting a passive strategy, that is, by simply holding the stated asset class and sector allocation	09 February 2016	n/a	375	
Old Mutual Multi Managers Absolute Balanced Fund		Pooled multi-manager	The benchmark has changed from CPI +7% to CPI + 6% effective 1 September 2013	Y	CPI + 6%	09 February 2016	n/a	2 401	
			<i>This includes multi-managers thus must be noted as possible "double-counting"</i>						
TOTAL									21 032

* Reasonable use of the survey may be made for purposes of comment and study provided that full acknowledgement is made to "Alexander Forbes Research & Product Development".

* While all possible care is taken in the compilation of the Survey, reliance is placed on information received from Investment Managers.

* The rankings and statistical information have been supplied for illustrative purposes only.

* Performance figures are shown gross of fees.

* Performance should not be judged over a short period of time.

* Past performance is not necessarily a guide to future performance.

GLOBAL MANAGER WATCH™ - CONSERVATIVE

Objective - The portfolios are balanced (i.e. multiple asset class) portfolios with exposure to both global and local assets, subject to the restrictions imposed by Regulation 28 of the Pension Funds Act and aim to minimise the probability of short-term (i.e. less than one year) capital loss while targeting long-term (i.e. more than five years) capital return..

INVESTMENT DATA TO THE END OF JANUARY 2016																								
PERFORMANCE DATA																								
	Month			Quarter			Year to Date			1 Year			3 Years (p.a.)			5 Years (p.a.)			7 Years (p.a.)			10 Years (p.a.)		
	Portfolio	Rank	Benchmark	Portfolio	Rank	Benchmark	Portfolio	Rank	Benchmark	Portfolio	Rank	Benchmark	Portfolio	Rank	Benchmark	Portfolio	Rank	Benchmark	Portfolio	Rank	Benchmark	Portfolio	Rank	Benchmark
INVESTMENT MANAGERS																								
Allan Gray Life Global Stable Portfolio	0.93%	1	0.70%	4.66%	1	2.06%	0.93%	1	0.70%	14.59%	1	8.24%	11.84%	1	7.72%	11.65%	3	7.62%	10.29%	4	8.15%	11.61%	1	*
Foord Conservative Balanced	-1.31%	6	0.66%	-0.12%	3	2.17%	-1.31%	6	0.66%	8.24%	3	11.86%	*	*	*	*	*	*	*	*	*	*	*	*
Investec Cautious Managed Fund	-0.06%	3	-1.74%	1.14%	2	-3.03%	-0.06%	3	-1.74%	10.05%	2	4.76%	11.29%	3	11.85%	12.40%	2	13.66%	12.20%	1	15.08%	*	*	*
Investment Solutions (Conserver)	0.51%	2	0.72%	-0.59%	5	-0.69%	0.51%	2	0.72%	4.92%	6	5.00%	8.86%	5	9.95%	10.63%	5	11.38%	11.35%	2	11.46%	11.02%	2	10.67%
OMIG MacroSolutions (Profile Capital)	-0.17%	4	1.74%	-0.59%	6	0.90%	-0.17%	4	1.74%	5.04%	5	6.23%	9.23%	4	9.39%	11.12%	4	10.91%	10.93%	3	10.30%	10.44%	3	10.29%
Old Mutual Multi Managers Absolute Balanced Fund	-0.86%	5	0.74%	-0.46%	4	2.08%	-0.86%	5	0.74%	7.72%	4	12.39%	11.65%	2	11.94%	13.31%	1	12.46%	*	*	*	*	*	*

- * Reasonable use of the survey may be made for purposes of comment and study provided that full acknowledgement is made to "Alexander Forbes Research & Product Development".
- * While all possible care is taken in the compilation of the Survey, reliance is placed on information received from Investment Managers.
- * The rankings and statistical information have been supplied for illustrative purposes only.
- * Reasonable use of the survey may be made for purposes of comment and study provided that full acknowledgement is made to "Alexander Forbes Research & Product Development".
- * Performance should not be judged over a short period of time.
- * Past history is not necessarily a guide to future performance.

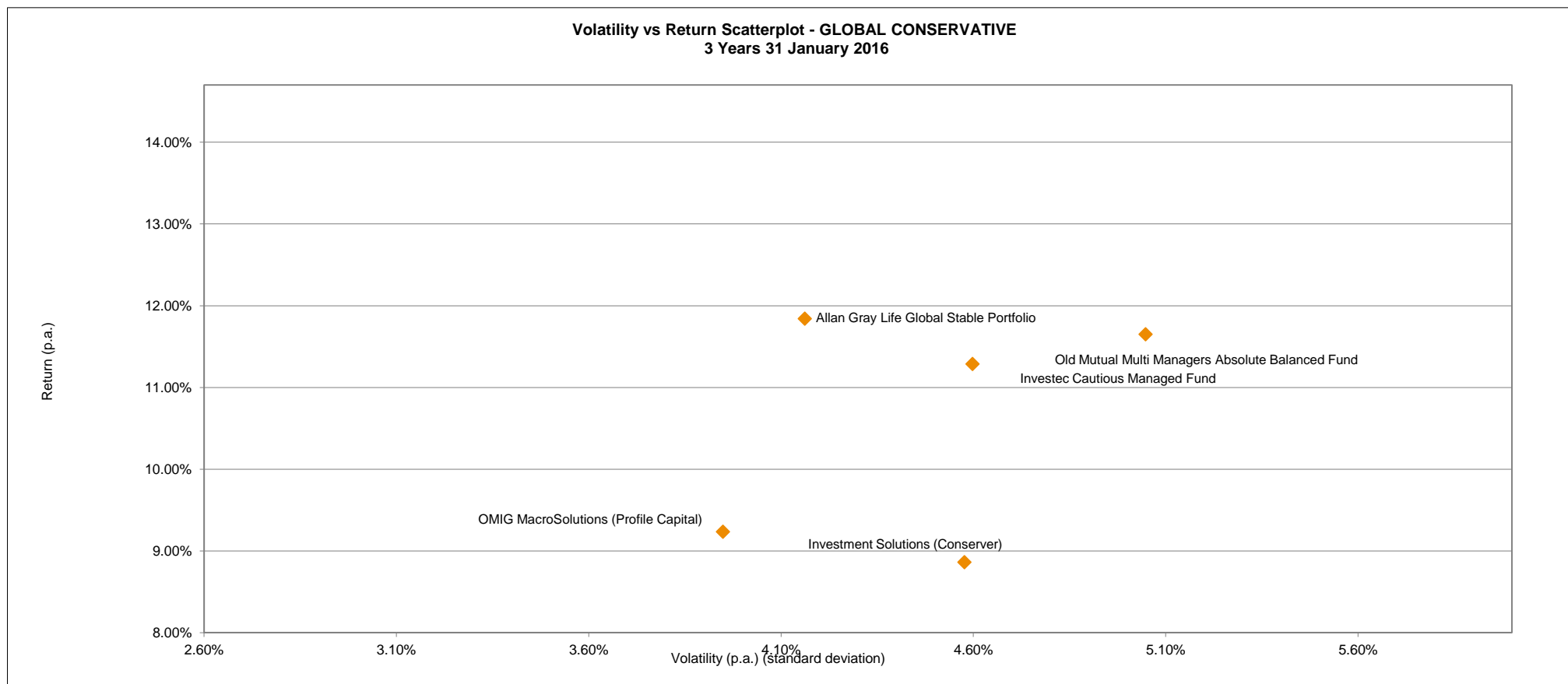
GLOBAL MANAGER WATCH™ - CONSERVATIVE

Objective - The portfolios are balanced (i.e. multiple asset class) portfolios, subject to the restrictions imposed by Regulation 28 of the Pension Funds Act and aim to minimise the probability of short-term (i.e. less than one year) capital loss while targeting long-term (i.e. more than five years) capital growth.

INVESTMENT DATA TO THE END OF JANUARY 2016														
RISK VS RETURN														
	Calculated on 3 year performance returns						Calculated on 5 year performance returns							
	3 Year Return (p.a.)	Rank	Volatility	Rank	Active Return	Tracking Error	Sharpe Ratio	5 Year Return (p.a.)	Rank	Volatility	Rank	Active Return	Tracking Error	Sharpe Ratio
Allan Gray Life Global Stable Portfolio	11.84%	1	4.16%	2	4.12%	4.14%	1.43	11.65%	2	4.09%	3	4.02%	4.07%	1.44
Investec Cautious Managed Fund	11.29%	3	4.60%	4	-0.56%	3.00%	1.17	12.40%	1	4.11%	4	-1.26%	3.44%	1.61
Investment Solutions (Conservor)	8.86%	5	4.58%	3	-1.08%	1.72%	0.65	10.63%	4	4.04%	2	-0.75%	1.58%	1.20
OMIG MacroSolutions (Profile Capital)	9.23%	4	3.95%	1	-0.15%	2.31%	0.85	11.12%	3	3.52%	1	0.21%	2.11%	1.52
Old Mutual Multi Managers Absolute Balanced Fund	11.65%	2	5.05%	5	-0.29%	5.44%	1.14	13.31%	1	4.67%	5	0.85%	4.98%	1.61
			Lower volatility = higher ranking							Lower volatility = higher ranking				
STATISTICS														
Range	2.98%							2.67%						
Highest	11.84%		5.05%		4.12%	5.44%	1.43	13.31%		4.67%		4.02%	4.07%	1.61
Upper Quartile	11.65%		4.60%		-0.15%	4.14%	1.17	12.40%		4.11%		1.17%	3.59%	1.61
Median	10.71%		4.58%		-0.29%	3.00%	1.14	11.63%		4.09%		-0.27%	2.77%	1.52
Average	10.61%		4.47%		0.41%	3.32%	1.05	11.51%		4.08%		0.56%	2.80%	1.48
Lower Quartile	9.23%		4.16%		-0.56%	2.31%	0.85	11.12%		4.04%		-0.87%	1.98%	1.44
Lowest	8.86%		3.95%		-1.08%	1.72%	0.65	10.63%		3.52%		-1.26%	1.58%	1.20
Number of participants	5		5		5		5		5		4		4	

- * Reasonable use of the survey may be made for purposes of comment and study provided that full acknowledgement is made to "Alexander Forbes Research & Product Development.
- * While all possible care is taken in the compilation of the Survey, reliance is placed on information received from Investment Managers.
- * The rankings and statistical information have been supplied for illustrative purposes only.
- * Performance figures are shown gross of fees.
- * Quantitative figures are calculated on 3 year performance returns.
- * Performance should not be judged over a short period of time.
- * Past history is not necessarily a guide to future performance.

GLOBAL MANAGER WATCH™ CONSERVATIVE



* Reasonable use of the survey may be made for purposes of comment and study provided that full acknowledgement is made to "Alexander Forbes Research & Product Development".

** Please see final page for Disclaimers and Glossary **

GLOBAL LARGE MANAGER WATCH™

Objective - The portfolios are balanced (i.e. multiple asset class) portfolios with exposure to both global and local assets, subject to the restrictions imposed by Regulation 28 of the Pension Funds Act and represent the best investment view of the largest managers of discretionary assets in South Africa, as determined under the survey rules imposed by Alexander Forbes Research & Product Development.

INVESTMENT DATA TO THE END OF JANUARY 2016																								
PERFORMANCE DATA																								
	Month			Quarter			Year to Date			1 Year			3 Years (p.a.)			5 Years (p.a.)			7 Years (p.a.)			10 Years (p.a.)		
	Portfolio	Rank	Benchmark	Portfolio	Rank	Benchmark	Portfolio	Rank	Benchmark	Portfolio	Rank	Benchmark	Portfolio	Rank	Benchmark	Portfolio	Rank	Benchmark	Portfolio	Rank	Benchmark			
INVESTMENT MANAGERS																								
Absa Asset Management Global Balanced	-1.94%	6	-1.74%	-2.49%	3	-3.03%	-1.94%	6	-1.74%	3.83%	8	4.76%	10.43%	11	11.85%	*	*	*	*	*	*			
Allan Gray	-0.16%	1	-1.71%	1.18%	1	-3.10%	-0.16%	1	-1.71%	10.19%	1	3.26%	13.86%	2	11.04%	14.74%	3	13.15%	14.41%	9	14.76%	14.23%	4	12.41%
Coronation	-3.90%	11	-1.74%	-4.67%	11	-3.03%	-3.90%	11	-1.74%	2.48%	10	4.76%	12.71%	4	11.85%	14.60%	5	13.66%	16.82%	2	15.08%	14.28%	3	12.65%
Foord Asset Management	-2.57%	10	-1.03%	-2.74%	5	-4.29%	-2.57%	10	-1.03%	6.30%	4	3.13%	12.63%	5	11.10%	15.61%	1	13.22%	16.51%	3	14.37%	14.30%	2	12.03%
Investec Asset Management	-1.54%	5	-1.74%	-2.85%	7	-3.03%	-1.54%	5	-1.74%	9.96%	2	4.76%	14.82%	1	11.85%	15.50%	2	13.66%	17.38%	1	15.08%	15.13%	1	12.65%
Oasis	-1.95%	7	-1.75%	-4.08%	9	-2.97%	-1.95%	7	-1.75%	2.07%	11	3.73%	11.30%	9	10.82%	13.50%	7	12.86%	14.10%	10	14.88%	11.96%	8	12.54%
OMIG MacroSolutions	-2.13%	8	-0.94%	-4.17%	10	-1.70%	-2.13%	8	-0.94%	4.03%	7	6.35%	11.35%	8	13.33%	13.07%	9	14.36%	14.59%	7	15.49%	12.24%	6	13.15%
Prudential Global Balanced	-1.01%	4	-1.99%	-3.00%	8	-3.33%	-1.01%	4	-1.99%	5.86%	5	4.08%	12.92%	3	11.40%	14.73%	4	13.31%	16.05%	4	14.88%	13.65%	5	12.54%
MMI - Global Balanced	-2.27%	9	-1.74%	-2.55%	4	-3.03%	-2.27%	9	-1.74%	7.56%	3	4.76%	12.51%	6	11.85%	13.46%	8	13.66%	14.45%	8	15.08%	11.96%	7	12.65%
SIM Global Unique	-0.50%	2	-1.74%	-2.83%	6	-3.03%	-0.50%	2	-1.74%	3.44%	9	4.76%	11.28%	10	11.85%	12.96%	10	13.66%	15.01%	6	15.08%	11.79%	10	12.65%
Stanlib	-0.88%	3	-1.99%	-0.79%	2	-3.33%	-0.88%	3	-1.99%	5.86%	6	4.08%	11.68%	7	11.40%	14.56%	6	13.31%	15.68%	5	14.88%	11.92%	9	12.54%

* Reasonable use of the survey may be made for purposes of comment and study provided that full acknowledgement is made to "Alexander Forbes Research & Product Development".

* While all possible care is taken in the compilation of the Survey, reliance is placed on information received from Investment Managers.

* The rankings and statistical information have been supplied for illustrative purposes only.

* Performance figures are shown gross of fees.

* Performance should not be judged over a short period of time.

* Past history is not necessarily a guide to future performance.

GLOBAL LARGE MANAGER WATCH™

Objective - The portfolios are balanced (i.e. multiple asset class) portfolios with exposure to both global and local assets, subject to the restrictions imposed by Regulation 28 of the Pension Funds Act and represent the best investment view of the largest managers of discretionary assets in South Africa, as determined under the survey rules imposed by Alexander Forbes Research & Product Development.

INVESTMENT DATA TO THE END OF JANUARY 2016														
RISK VS RETURN														
	Calculated on 3 year performance returns						Calculated on 5 year performance returns							
	3 Year Return (p.a.)	Rank	Volatility	Rank	Active Return	Tracking Error	Sharpe Ratio	5 Year Return (p.a.)	Rank	Volatility	Rank	Active Return	Tracking Error	Sharpe Ratio
Absa Asset Management Global Balanced	10.43%	11	6.48%	2	-1.42%	1.56%	0.70	*		*		*	*	*
Allan Gray	13.86%	2	7.10%	6	2.83%	2.80%	1.12	14.74%	3	6.26%	2	1.59%	2.95%	1.43
Coronation	12.71%	4	7.85%	10	0.86%	2.35%	0.87	14.60%	5	7.15%	9	0.94%	2.07%	1.23
Foord Asset Management	12.63%	5	7.43%	8	1.53%	3.68%	0.91	15.61%	1	7.08%	8	2.40%	3.17%	1.39
Investec Asset Management	14.82%	1	8.23%	11	2.97%	2.85%	1.09	15.50%	2	7.35%	10	1.84%	2.71%	1.32
Oasis	11.30%	9	7.82%	9	0.48%	2.44%	0.69	13.50%	7	6.88%	6	0.64%	2.20%	1.12
OMIG MacroSolutions	11.35%	8	6.99%	4	-1.98%	1.77%	0.78	13.07%	9	6.60%	5	-1.29%	1.80%	1.10
Prudential Global Balanced	12.92%	3	7.22%	7	1.52%	1.30%	0.97	14.73%	4	6.88%	7	1.42%	1.42%	1.30
MMI - Global Balanced	12.51%	6	7.07%	5	0.66%	1.41%	0.94	13.46%	8	6.33%	3	-0.20%	1.38%	1.21
SIM Global Unique	11.28%	10	6.54%	3	-0.57%	1.60%	0.82	12.96%	10	6.41%	4	-0.70%	1.49%	1.12
Stanlib	11.68%	7	6.12%	1	0.29%	2.26%	0.95	14.56%	6	6.14%	1	1.25%	2.40%	1.43
			<i>Lower volatility = higher ranking</i>							<i>Lower volatility = higher ranking</i>				
STATISTICS														
Range	3.54%							2.66%						
Highest	14.82%		8.23%		2.97%	3.68%	1.12	15.61%		7.35%		2.40%	3.17%	1.43
Upper Quartile	12.87%		7.72%		1.53%	2.71%	0.97	14.74%		7.03%		1.55%	2.63%	1.37
Median	12.09%		7.16%		0.76%	2.30%	0.92	13.66%		6.74%		1.09%	2.13%	1.27
Average	11.04%		7.24%		0.86%	2.25%	0.91	13.15%		6.71%		0.79%	2.16%	1.27
Lower Quartile	11.43%		7.01%		0.34%	1.65%	0.84	13.47%		6.35%		0.01%	1.57%	1.15
Lowest	11.28%		6.12%		-1.98%	1.30%	0.69	12.96%		6.14%		-1.29%	1.38%	1.10
Number of participants	11		11		11	11	10	10		10		10	10	10

* Reasonable use of the survey may be made for purposes of comment and study provided that full acknowledgement is made to "Alexander Forbes Research & Product Development.

* While all possible care is taken in the compilation of the Survey, reliance is placed on information received from Investment Managers.

* The rankings and statistical information have been supplied for illustrative purposes only.

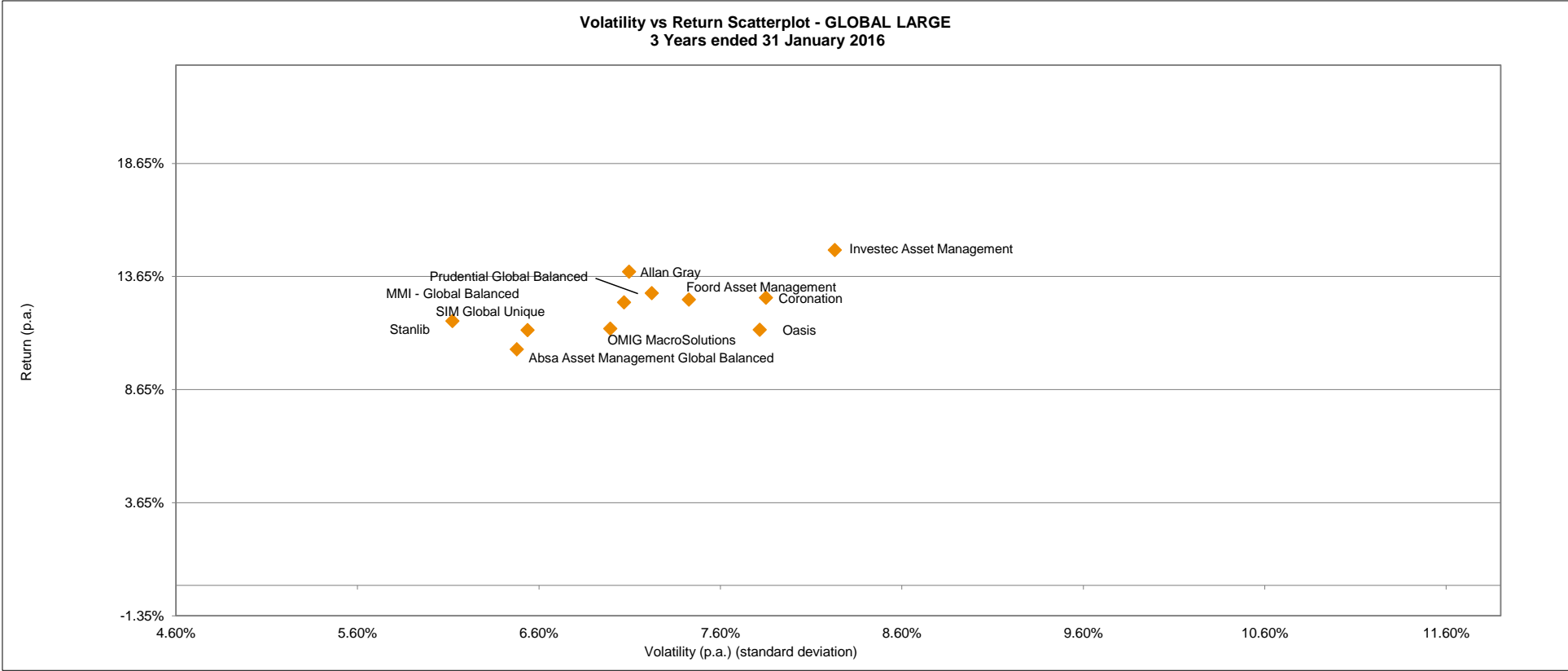
* Performance figures are shown gross of fees.

* Quantitative figures are calculated on 3 year performance returns.

* Performance should not be judged over a short period of time.

* Past history is not necessarily a guide to future performance.

GLOBAL LARGE MANAGER WATCH™



* Reasonable use of the survey may be made for purposes of comment and study provided that full acknowledgement is made to "Alexander Forbes Research & Product Development".
 ** Please see final page for Disclaimers and Glossary **

GLOBAL LARGE MANAGER WATCH™

Objective - The portfolios are balanced (i.e. multiple asset class) portfolios, subject to the restrictions imposed by Regulation 28 of the Pension Funds Act and are have exposure to both global and local assets. These statistics represent the various categories that portfolios are represented in but only for those managers that are open to new investments.

GLOBAL INVESTABLE PERFORMANCE DATA ANALYSIS TO THE END OF JANUARY 2016								
	Return - Month	Return - Quarter	Return - Year to Date	Return - 1 Year	Return - 3 Years (p.a.)	Return - 5 Years (p.a.)	Return - 7 Years (p.a.)	Return - 10 Years (p.a.)
GLOBAL DYNAMIC								
High	1.40%	3.21%	1.40%	16.19%	16.30%	16.62%	16.35%	13.84%
Upper Quartile	0.05%	2.38%	0.05%	11.20%	13.86%	14.77%	15.83%	13.70%
Median	-0.55%	-0.61%	-0.55%	8.74%	14.29%	15.15%	16.49%	13.56%
Average	-0.79%	-0.78%	-0.79%	8.95%	13.33%	14.65%	15.89%	13.34%
Asset-weighted Average	-0.32%	0.51%	-0.32%	9.71%	10.90%	12.51%	13.08%	11.49%
Lower Quartile	-1.91%	-2.75%	-1.91%	6.41%	11.97%	13.42%	15.19%	12.69%
Low	-2.96%	-3.81%	-2.96%	3.46%	11.68%	11.64%	11.36%	12.37%
Range	4.36%	7.02%	4.36%	12.73%	4.61%	4.99%	4.99%	1.47%
Number of participants	6	6	6	6	6	6	6	6
GLOBAL BIV								
High	0.70%	1.18%	0.70%	13.13%	14.82%	15.61%	17.38%	15.13%
Upper Quartile	-1.25%	-2.58%	-1.25%	6.19%	12.94%	14.82%	16.03%	13.72%
Median	-1.99%	-3.33%	-1.99%	4.08%	11.40%	13.31%	14.88%	12.54%
Average	-1.75%	-2.97%	-1.75%	3.73%	10.82%	12.86%	14.88%	12.54%
Asset-weighted Average	-1.38%	-1.78%	-1.38%	6.66%	11.89%	13.36%	14.17%	12.49%
Lower Quartile	-2.40%	-3.99%	-2.40%	3.70%	11.23%	13.04%	14.42%	11.85%
Low	-3.11%	-5.92%	-3.11%	-18.02%	-2.65%	2.60%	6.45%	7.50%
Range	3.81%	7.10%	3.81%	31.15%	17.47%	13.02%	10.93%	7.63%
Number of participants	22	22	22	22	20	16	15	15
GLOBAL CONSERVATIVE								
High	0.93%	4.66%	0.93%	14.59%	11.84%	13.31%	12.20%	11.61%
Upper Quartile	0.37%	0.82%	0.37%	9.60%	11.65%	12.40%	11.56%	11.31%
Median	-0.12%	0.60%	-0.12%	8.36%	10.62%	11.57%	11.72%	11.34%
Average	-0.16%	0.67%	-0.16%	8.66%	10.48%	11.56%	11.64%	11.28%
Asset-weighted Average	0.10%	1.52%	0.10%	10.08%	11.10%	12.02%	11.46%	11.37%
Lower Quartile	-0.69%	-0.55%	-0.69%	5.71%	9.23%	11.12%	10.77%	10.73%
Low	-1.31%	-0.59%	-1.31%	4.92%	8.86%	10.63%	10.29%	10.44%
Range	2.24%	5.25%	2.24%	9.67%	2.98%	2.67%	1.91%	1.17%
Number of participants	6	6	6	6	5	5	4	3
GLOBAL LMW								
High	-0.16%	1.18%	-0.16%	10.19%	14.82%	15.61%	17.38%	15.13%
Upper Quartile	-0.94%	-2.52%	-0.94%	6.93%	12.81%	14.74%	16.40%	14.27%
Median	-1.74%	-3.03%	-1.74%	4.76%	11.85%	13.66%	15.08%	12.65%
Average	-1.50%	-2.94%	-1.50%	3.35%	10.86%	13.06%	14.69%	12.37%
Asset-weighted Average	-1.15%	-1.43%	-1.15%	6.83%	11.46%	12.83%	13.58%	8.55%
Lower Quartile	-2.20%	-3.54%	-2.20%	3.63%	11.32%	13.47%	14.49%	11.96%
Low	-2.57%	-4.17%	-2.57%	2.07%	10.43%	12.96%	14.10%	11.79%
Range	2.41%	5.35%	2.41%	8.12%	4.39%	2.66%	3.28%	3.35%
Number of participants	10	10	10	10	10	9	9	9

**** Median Compounded : The longer term median returns reflected are calculated by compounding the monthly median returns over the various periods.**

* Reasonable use of the survey may be made for purposes of comment and study provided that full acknowledgement is made to "Alexander Forbes Research & Product Development".

** Please see final page for Disclaimers and Glossary **

GLOBAL MANAGER WATCH™ LARGE

Objective - The portfolios are balanced (i.e. multiple asset class) portfolios, subject to the restrictions imposed by Regulation 28 of the Pension Funds Act and are have exposure to both global and local assets. These statistics represent the various categories that portfolios are represented in, regardless of whether these asset managers are open to new investments or not.

GLOBAL NON INVESTABLE PERFORMANCE DATA ANALYSIS TO THE END OF JANUARY 2016								
	Return - Month	Return - Quarter	Return - Year to Date	Return - 1 Year	Return - 3 Years (p.a.)	Return - 5 Years (p.a.)	Return - 7 Years (p.a.)	Return - 10 Years (p.a.)
GLOBAL DYNAMIC								
Median	-0.57%	-0.75%	-0.57%	8.35%	14.00%	15.06%	16.43%	13.52%
Average	-1.12%	-1.35%	-1.12%	7.80%	13.26%	14.33%	15.63%	13.16%
Asset-weighted Average	-0.82%	-0.29%	-0.82%	9.68%	12.80%	14.86%	15.85%	13.86%
Number of participants	7	7	7	7	7	7	7	7
GLOBAL CONSERVATIVE								
Median	-0.12%	0.60%	-0.12%	8.36%	10.71%	11.63%	11.73%	11.35%
Average	-0.16%	0.67%	-0.16%	8.66%	10.61%	11.51%	11.57%	11.23%
Asset-weighted Average	0.10%	1.52%	0.10%	10.08%	11.10%	12.02%	11.46%	11.37%
Number of participants	6	6	6	6	6	6	6	6
GLOBAL BIV								
Median	-2.03%	-3.36%	-2.03%	4.00%	11.48%	13.36%	14.92%	12.56%
Average	-1.85%	-3.05%	-1.85%	3.68%	10.92%	12.93%	14.62%	12.32%
Asset-weighted Average	-1.77%	-2.26%	-1.77%	6.91%	13.22%	14.93%	16.01%	14.05%
Number of participants	23	23	23	23	22	22	22	22
GLOBAL LMW								
Median	-1.94%	-2.93%	-1.94%	4.86%	12.09%	13.66%	15.09%	12.65%
Average	-1.71%	-3.10%	-1.71%	3.26%	11.04%	13.15%	14.76%	12.41%
Asset-weighted Average	-1.70%	-2.10%	-1.70%	7.18%	13.26%	14.95%	16.02%	14.19%
Number of participants	11	11	11	11	11	11	11	11

**** Median Compounded : The longer term median returns reflected are calculated by compounding the monthly median returns over the various periods.**

* Reasonable use of the survey may be made for purposes of comment and study provided that full acknowledgement is made to "Alexander Forbes Research & Product Development".

** Please see final page for Disclaimers and Glossary **

MARKET DATA

MARKET DATA TO THE END OF JANUARY 2016

PERFORMANCE DATA

	Month	Quarter	Year to date	1 Year	3 Years (p.a.)	5 Years (p.a.)	7 Years (p.a.)	10 Years (p.a.)
INDEX RETURNS INCLUDING INCOME & INFLATION								
FTSE / JSE All Share Index (Free Float)	-2.99%	-8.33%	-2.99%	-1.06%	9.98%	12.77%	16.60%	12.74%
FTSE / JSE Capped All Share Index	-3.04%	-8.33%	-3.04%	-1.07%	10.10%	13.00%	16.84%	13.08%
FTSE / JSE SWIX All Share Index	-2.31%	-7.71%	-2.31%	-2.66%	11.59%	14.44%	17.69%	13.41%
FTSE/JSE Mid Cap Index	2.71%	-5.77%	2.71%	-10.06%	8.66%	11.16%	15.22%	11.23%
FTSE/JSE Small Cap Index	-4.62%	-13.40%	-4.62%	-12.42%	10.30%	11.97%	14.33%	10.62%
FTSE/JSE SA Listed Property Index	-2.98%	-9.37%	-2.98%	-2.42%	12.51%	17.31%	17.99%	16.45%
All Bond	4.62%	-3.38%	4.62%	-5.61%	3.65%	7.52%	7.32%	7.38%
Barclays Capital ILB Index	0.78%	-0.29%	0.78%	4.51%	5.43%	9.60%	9.51%	9.81%
OTHI Index	5.42%	-4.23%	5.42%	-7.71%	4.31%	8.21%	8.11%	7.70%
GOVI Index	4.32%	-3.05%	4.32%	-4.91%	3.57%	7.21%	7.04%	7.01%
Alexander Forbes Money Market	0.55%	1.63%	0.55%	6.46%	5.94%	5.82%	6.34%	7.50%
Short Term Fixed Interest Rate Index	0.52%	1.62%	0.52%	6.51%	5.89%	5.78%	6.34%	7.31%
Combination of old CPIX and new CPI	0.26%	0.60%	0.26%	5.23%	5.31%	5.54%	5.35%	6.12%
Consumer Price Inflation (Old/New combined CPI)	0.26%	0.60%	0.26%	5.23%	5.31%	5.54%	5.35%	6.16%
Consumer Price Inflation excluding OER [I-Net code: AECPIXU]	0.17%	0.52%	0.17%	5.22%	5.37%	5.66%	5.35%	6.11%
Consumer Price Inflation (Headline CPI) [I-Net code: AECPII]	0.26%	0.60%	0.26%	5.23%	5.31%	5.54%	5.36%	5.87%
JP Morgan Global Bond Index	4.15%	15.72%	4.15%	34.70%	19.75%	18.00%	8.90%	14.27%
MSCI World Index (Rands)	-3.50%	5.96%	-3.50%	30.48%	28.72%	24.73%	19.59%	14.98%
Citi WGBI (was Salomon Brothers Bond Index) (Rands)	4.01%	15.35%	4.01%	34.00%	19.14%	17.57%	8.58%	13.91%

QUANTITATIVE ANALYSIS	Calculated on rolling performance returns	
	Volatility (3 years)	Volatility (5 years)
FTSE / JSE All Share Index (Free Float)	11.55%	11.08%
FTSE / JSE Capped All Share Index	11.45%	10.96%
FTSE / JSE SWIX All Share Index	10.77%	9.98%
FTSE/JSE Mid Cap Index	10.88%	9.47%
FTSE/JSE Small Cap Index	10.14%	8.91%
FTSE/JSE SA Listed Property Index	14.95%	13.46%
All Bond	8.93%	7.66%
Barclays Capital ILB Index	6.79%	6.15%
OTHI Index	10.43%	9.03%
GOVI Index	8.49%	7.27%
Alexander Forbes Money Market	0.14%	0.12%
Short Term Fixed Interest Rate Index	0.18%	0.15%
JP Morgan Global Bond Index	10.32%	1.36%
MSCI World Index (Rands)	11.32%	12.61%
Citi WGBI (was Salomon Brothers Bond Index) (Rands)	10.12%	11.67%

* The risk-free rate used in the quantitative calculations is the South African 3 month Treasury Bill
International Indices sourced from Morningstar

All rights in the FTSE/JSE Africa Index Series vest in the JSE Securities Exchange South Africa (JSE) and in FTSE International Limited (FTSE) jointly. FTSETM is a trade mark of the London Stock Exchange Limited (LSE) and The Financial Times Limited (FT) jointly and issued by FTSE under licence. JSE is a trade mark of the JSE.

The FTSE/JSE Africa Index Series is calculated by FTSE International Limited (FTSE) in conjunction with the JSE Securities Exchange South Africa (JSE) in accordance with standard criteria. The FTSE/JSE Africa Index Series is the proprietary information of FTSE and the JSE. All copyright subsisting in the FTSE/JSE Africa Index values and constituent list vests in FTSE and the JSE jointly. All their rights are reserved.

* Reasonable use of the survey may be made for purposes of comment and study provided that full acknowledgement is made to "Alexander Forbes Research & Product Development".

* While all possible care is taken in the compilation of the Survey, reliance is placed on information received from Investment Managers.

* The rankings and statistical information have been supplied for illustrative purposes only.

* Performance figures are shown gross of fees.

* Performance should not be judged over a short period of time.

* Past history is not necessarily a guide to future performance.



APPENDIX

EXPLANATORY NOTES

General Disclaimers :

This document has been prepared for use by clients of the Alexander Forbes Group. Any other third party that is not a client of the Alexander Forbes Group and for whose specific use this document has not been supplied, must be aware that Alexander Forbes Group shall not be liable for any damage, loss or liability of any nature incurred by any third party and resulting from the information contained herein.

The information contained herein is supplied on an "as is" basis and has not been compiled to meet any third party's individual requirements. It is the responsibility of any third party to satisfy himself or herself, prior to relying on this information that the contents meets the third party's individual requirements.

Nothing in this document, when read in isolation and without professional advice, should be construed as solicitation, offer, advice, recommendation, or any other enticement to acquire or dispose of any financial product, advice or investment, or to engage in any financial transaction or investment. A third party should consult with an authorised financial advisor prior to making any financial decisions

Alexander Forbes has taken all reasonable steps to ensure the quality and accuracy of the contents of this document and encourages all readers to report incorrect and untrue information, subject to the right of Alexander Forbes to determine, in its sole and absolute discretion, the contents of this document. Irrespective of the attempts by Alexander Forbes to ensure the correctness of this document, Alexander Forbes does not make any warranties or representations that the content will in all cases be true, correct or free from any errors. In particular, certain aspects of this document might rely on or be based on information supplied to Alexander Forbes by other persons or institutions.

Alexander Forbes has attempted to ensure the accuracy of such information, but shall not be liable for any damage, loss or liability of any nature incurred by any party and resulting from the errors caused by incorrect information supplied to Alexander Forbes.

Performance figures are shown gross of fees and taxes. Past history is not necessarily a guide to future performance.

Quantitative figures are calculated on 3 year performance returns.

Performance should not be judged over a short period of time.

information.

General :

GIPS™ is a trademark owned by the CFA Institute

Statistical Definitions :

The Median is the value above or below which half the managers fall.

The Upper Quartile is the value above which one quarter of the managers fall.

The Lower Quartile is the value below which one quarter of the managers fall.

Risk Analysis Definitions :

"Volatility" is the annualised standard deviation of the manager's monthly returns around its average / mean.

"Volatility" is a measure of the variability of the manager's returns.

"Return to Risk" is the return divided by the "Volatility"

"Return to Risk" is a measure of the return earned per unit of risk taken.

"Active return" is the return earned by the portfolio less the return on the benchmark.

"Active Return" is a measure of the value that the manager has added or detracted over its benchmark return.

"Tracking Error" is the annualised standard deviation of the monthly "Active Returns".

"Tracking Error" is a measure of the variability of the manager's returns relative to its benchmark returns.

"Sharpe Ratio" is the return earned by the portfolio less a risk-free rate divided by the "Volatility" of the portfolio.

"Sharpe Ratio" is a measure of what amount of the performance is due to smart investment decisions versus excessive risk.

GIPS™ - Global Investment Performance Standards

Ethical principles to achieve full disclosure and fair presentation of investment performance

In South Africa GIPS™ SA requires managers to obtain a verification certificate on compliance

GIPS™ - Status:

C - Indication that manager is compliant but not verified

V - Indication that manager is verified

More information can be obtained from <http://www.gipsstandards.org/>